

USER MANUAL

GPURE® REBEL Stainless Steel Single Lever Mixer



- **GPR1000** - Zero Lead Stainless Steel 304 Hob Mounted Basin Mixer w/ Yellow and Blue Printed Handle
- **GPR2000D** -Zero Lead Stainless Steel 304 Hob Mounted Basin Mixer w/ Yellow and Blue Printed Care Handle
- **GPR3000** - Zero Lead Stainless Steel 304 Hob Mounted Gooseneck Swivel Spout Sink Mixer w/ Yellow and Blue Printed Handle
- **GPR3500** - Zero Lead Stainless Steel 304 Hob Mounted Low Line Swivel Spout Sink Mixer w/ Yellow and Blue Printed Handle
- **GPR3500D** - Zero Lead Stainless Steel 304 Hob Mounted Low Line Swivel Spout Sink Mixer w/ Yellow and Blue Printed Care Handle
- **GPR4000** - Zero Lead Stainless Steel 304 Wall Mounted Recess Shower Mixer w/ Yellow and Blue Printed Handle



Disclaimer: Stainless Steel Grade 304 is manufactured with ZERO Lead.

gentecaustralia.com.au

USER MANUAL

Table of Contents

Scope of Use	2
Technical Information	3
Product Images & Technical Drawings	4
Installation Steps	6
Water Quality	10
Troubleshooting	10
Cleaning & Maintenance	12
Responsibly Sourced	12

Scope of Use

Installation of all products should adhere to the manufacturer's guidelines, as well as comply with PCA, AS/NZS3500 standards, and any other relevant regulatory provisions. This product range complies with the Lead Free requirements of the National Construction Code Volume Three.

- **Installation:** Refer to the installation instructions included within this manual
- **Water quality:** In line strainer (supplied) must be installed to ensure water quality
- **Temperature recommendation:**
 - Single temperature up to: 50°C
 - Dual temperature up to: 80°C
 - Minimum temperature: 5°C
- **Mounting:** Wall, bench or in line installation

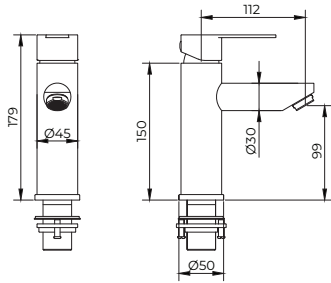
Technical Information

Material	Zero Lead Stainless Steel 304
Cartridge	Ceramic Disc
Cartridge Size	35mm
Inlet	<ul style="list-style-type: none"> • 15 mm Female Flexible Connections: GPR1000, GPR2000D, GPR3000, GPR3500, GPR3500D • 15mm Female: GPR4000
Outlet	<ul style="list-style-type: none"> • Gooseneck Swivel Spout: GPR3000 • Low Line Swivel Spout: GPR3500 & GPR3500D • 15mm Female (G 1/2" BSP): GPR4000
Working Pressure	50kPa - 500kPa
Manufacturers Recommended Pressure	350 kPa
Working Temperatures	5°C - 80°C
Finish	Polished
Servicing	Preventative Maintenance

The GPURE® REBEL range is supplied with yellow and blue indicators. In the event you require red and blue indicators, please contact GENTEC prior to placing your purchase order. This must be specified when purchasing the item.

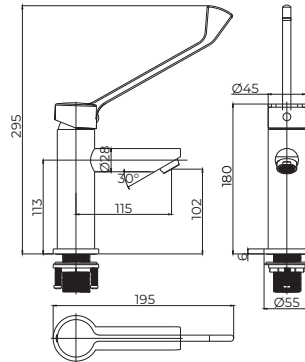
USER MANUAL

Product Images & Technical Drawings



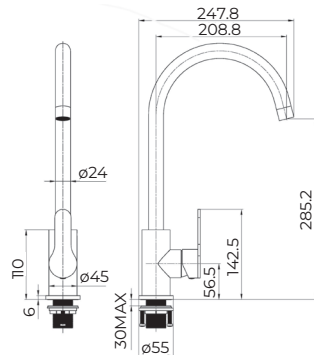
GPR1000

Zero Lead Stainless Steel 304 Hob Mounted Basin Mixer w/ Yellow and Blue Printed Handle



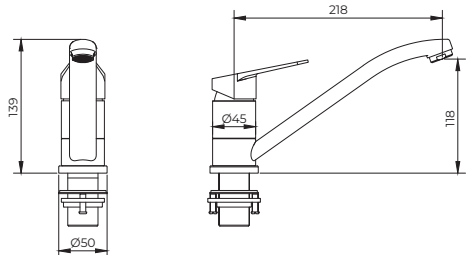
GPR2000D

Zero Lead Stainless Steel 304 Hob Mounted Basin Mixer w/ Yellow and Blue Printed Care Handle

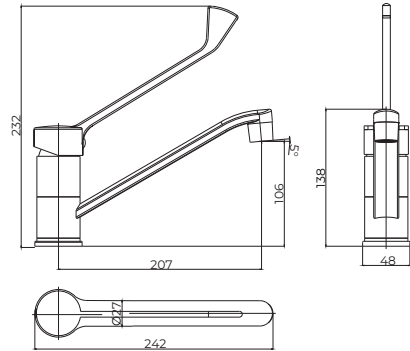


GPR3000

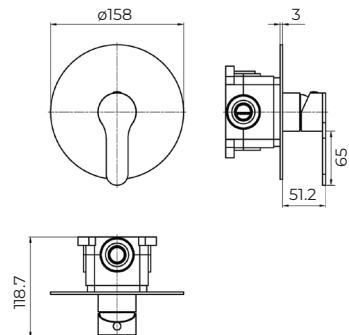
Zero Lead Stainless Steel 304 Hob Mounted Gooseneck Swivel Spout Sink Mixer w/ Yellow and Blue Printed Handle


GPR3500

Zero Lead Stainless Steel 304 Hob Mounted Low Line Swivel Spout Sink Mixer w/ Yellow and Blue Printed Handle


GPR3500D

Zero Lead Stainless Steel 304 Hob Mounted Low Line Swivel Spout Sink Mixer w/ Yellow and Blue Printed Care Handle


GPR4000

Zero Lead Stainless Steel 304 Wall Mounted Recess Shower Mixer w/ Yellow and Blue Printed Handle

Note: Dimensions are provided as a guide and are subject to manufacturing tolerances.

USER MANUAL

Installation Steps

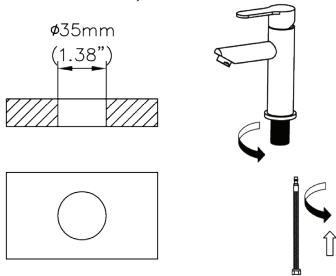
GPR1000, GPR2000D INSTALLATION STEPS

Important Note

Mixer must be installed to the requirements of AS/NZS 3500 by a qualified & licenced plumber. Before installing the tap check the **water pressure is between 150kPa and 500kPa**.

- A. Please flush out new pipe work prior to connecting the new mixer.
B. All mixers should be installed with isolating stop valves.

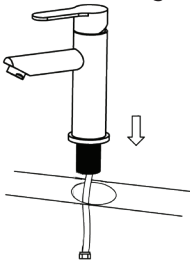
- Step 1. Drill a hole 34mm to 36mm where the tap is to be mounted.



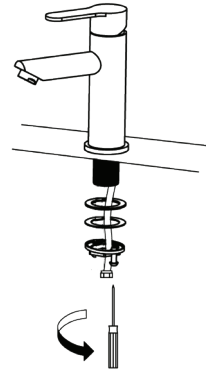
- Step 2. Remove rubber seal, fixing plate and fixing nut.

- Step 3. Screw in one flexible hose.

- Step 4. Place the tap unit in the pre-punched hole in the sink or basin with the flexible hose going first.



- Step 5. From underneath the basin, fix rubber seal, fixing plate and fixing nut by hand then use a screw driver to tighten both tension screws firmly. Ensure the tap set is firmly attached.



- Step 6. Screw in the second flexi hose.

- Step 7. Connect the mixer to the water supply by connecting the two flexible hoses to the isolating stop valves. Check for leaks.

- Step 8. Activate mixer to verify operation.

Important Information

We do not recommend dismantling the internal parts of the tap set.

For any direct ablation fixture, it is important to allow for some form of temperature blending device. Refer to AS/NZS3500 Plumbing and drainage.

GPR3000 INSTALLATION STEPS

Important Note

Mixer must be installed to the requirements of AS/NZS 3500 by a qualified and licenced plumber. Before installing the tap check the **water pressure is between 150kPa and 500kPa**.

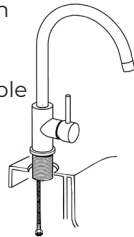
- A. Please flush out new pipe work prior to connecting the new mixer.
 B. All mixers should be installed with isolating stop valves.

Step 1. Drill a hole 34mm to 36mm where the tap is to be mounted.

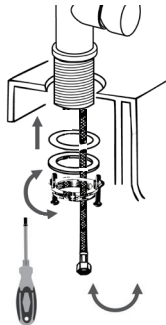
Step 2. Remove rubber seal, fixing plate and fixing nut from threaded tail then screw on the threaded tail onto the tap body.

Step 3. Screw in one flexible hose.

Step 4. Place the tap unit in the pre-punched hole in the sink or basin with the flexible hose going first.



Step 5. From underneath the basin, fix rubber seal, fixing plate and fixing nut by hand then use a screw driver to tighten both tension screws firmly. Ensure the tap set is firmly attached.



Step 6. Screw in the second flexi hose.



Step 7. Connect the mixer to the water supply by connecting the two flexible hoses to the isolating stop valves. Activate mixer to verify operation.

Important Information

We do not recommend dismantling the internal parts of the tap set.

For any direct ablation fixture, it is important to allow for some form of temperature blending device. Refer to AS/NZS3500 Plumbing and drainage.

USER MANUAL

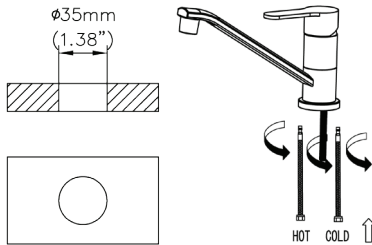
GPR3500 & GPR3500D INSTALLATION STEPS

Important Note

Mixer must be installed to the requirements of AS/NZS 3500 by a qualified and licenced plumber. Before installing the tap check the **water pressure is between 150kPa and 500kPa**.

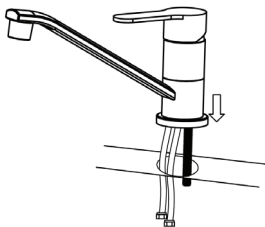
- A. Please flush out new pipe work prior to connecting the new mixer.
- B. All mixers should be installed with isolating stop valves.

Step 1. Drill a hole 34mm to 36mm where the tap is to be mounted.

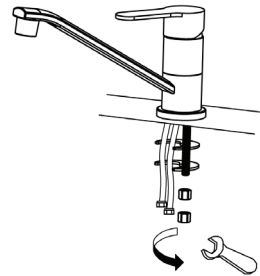


Step 2. Screw in the fixing bolt and two flexible hoses.

Step 3. Place the tap unit in the pre-punched hole in the sink or basin with the flexible hoses going first.



Step 4. From underneath the basin, fix rubber seal, fixing plate and fixing nut by hand then tighten the first fixing nut followed by the second fixing nut. Ensure the tap is firmly attached.



Step 5. Connect the mixer to the water supply by connecting the two flexible hoses to the isolating stop valves. Check for leaks.

Step 6. Activate mixer to verify operation.

Important Information

We do not recommend dismantling the internal parts of the tap set.

For any direct ablation fixture, it is important to allow for some form of temperature blending device. Refer to AS/NZS3500 Plumbing and drainage.

GPR4000 INSTALLATION STEPS

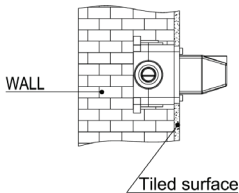
Important Note

Mixer must be installed to the requirements of AS/NZS 3500 by a qualified and licenced plumber. Before installing the tap check the **water pressure is between 150kPa and 500kPa**.

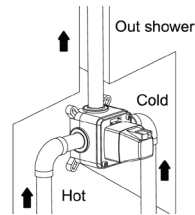
- A. Please flush out new pipe work prior to connecting the new mixer.
 B. All mixers should be installed with isolating stop valves.

Step 1. Fit the mixer body to a suitable mounting surface or noggin using supplied screws. Ensure the mixer body is installed square (using the spirit level on the cover) and recessed such that the cover plate sits flush on the finished wall.

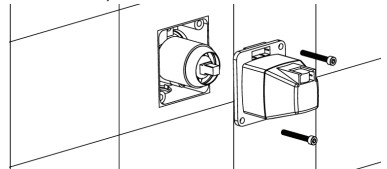
If you have additional wall finishings outside of standard installations, please ensure that this is taken into consideration when assessing the installation position of the in-wall mixer body. Ensure serviceable areas are accessible.



Step 2. Ensure the in-wall mixer body is sealed and waterproofed such that water and moisture will not penetrate the wall. Make the inlet / outlet connections as per the below image. Do not remove the protective cover until ready to complete installation by installing cover plate and handle.

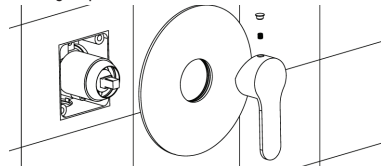


Step 3. Remove protective cover.



Step 4. Apply a suitable sealant to the rear of the cover plate and install to the body.

Step 5. Fit the handle to the cartridge, ensure it is fully engaged with the spindle. Tighten grub screw and replace handle button cover. Activate hot and cold water to verify operation.



Important Information

We do not recommend dismantling the internal parts of the shower set.

For any direct ablation fixture, it is important to allow for some form of temperature blending device. Refer to AS/NZS3500 Plumbing and drainage.

USER MANUAL

Water Quality

Maximum chloride Cl- level Guidelines in plumbing systems

	Cold Water	Hot Water
Grade 304L	200	50
Grade 316L	1000	250

When materials may be used in either hot or cold water lines, the guidelines for hot water should be used.

Within these guidelines at ambient temperatures and provided the pH >~6, any negative effect to stainless steel will be unlikely.

Note: Chlorides in water - where the density of the solvent (water) is 1 (which it is to within 0.1% at ambient temperatures), then mg/L = ppm.

For brass products, please ensure the chlorine and chloramines levels are not more than 0.4 ppm.

Please ensure that the water quality supplied to the fixtures meets safe drinking standards to prevent potential staining of the product.

Chlorine guidelines (not to be confused with chloride)

- 304L suitable for chlorine levels up to 2ppm.
- Short term dosing, for example 25-50ppm, for sterilisation purposes of 24-48 hours acceptable if effectively flushed through afterwards.
- Sterilisation is essential during commissioning of potable water systems.

Reference: <https://www.assda.asn.au/component/content/article?id=271:chlorine-and-chloride--same-element,-very-different-effect>

Troubleshooting

Problem	Cause	How to Fix
Tap is not shutting off	<ul style="list-style-type: none">• Debris• Grease/ lubricants• High pressure	<ul style="list-style-type: none">• Have you flushed the water line for a minimum of 1 minute before connecting the water• Have you installed the strainer and flow controller if provided• If debris has gone through the cartridge, this is more than likely to be the cause. If the ceramic disc is broken or damaged, then the cartridge must be replaced• Have you checked to make sure the pressure is to manufacturer's recommendations and in line with the plumbing code

Problem	Cause	How to Fix
Issue with water flow	<ul style="list-style-type: none"> • Not enough water • Too much / little water 	<ul style="list-style-type: none"> • Check for blockage in the inlet where the strainer is fitted or is the aerator blocked with debris • Is the isolating valve fully open on both hot and cold • Have got these in a bank, if so, is the inlet pipes been sized correctly • Has the laminar flow control been installed • High pressure exceeding the plumbing code will have an effect on the product and must not exceed 500kPa • If flexi hoses are used, ensure it's not kinked/twisted
Not enough water	<ul style="list-style-type: none"> • Taps installed in a bank or a trough 	<ul style="list-style-type: none"> • Ensure the main pipe size is sized correctly to ensure adequate water is able to service the taps installed in a bank or a trough
The tap is leaking	<ul style="list-style-type: none"> • Debris • Loose cartridge 	<ul style="list-style-type: none"> • Have you flushed your water lines • If rubbish has gone through the cartridge, there is a high chance • Tighten cartridge lock nut
No water	<ul style="list-style-type: none"> • Isolating valve is off 	<ul style="list-style-type: none"> • Ensure the Isolating valve is turned on
Water dripping inside cabinet	<ul style="list-style-type: none"> • Flexi hose 	<ul style="list-style-type: none"> • Undo flexi hoses, check O-Rings/ check hose condition. Replace if needed • Check that flexi hoses are tight.
How often do I need to service my tap	<ul style="list-style-type: none"> • Prevent product failure 	<ul style="list-style-type: none"> • Service and maintenance of the main operating parts is recommended as this will prolong the life of the product

Installation is subject to the Plumbing Code of Australia regulatory requirements and provisions stipulated in AS/NZS 3500.1 (Bubblers) and AS/NZS 3500.4 (Taps)

USER MANUAL

Cleaning & Maintenance

To minimise downtime and maximise the functional life of the product, GENTEC recommends servicing your product at least every 12 months, under heavy use may need to be checked and serviced more often.

- The product must be handled carefully to avoid causing any physical damage.
- Use the product at least once every week to ensure all parts are kept lubricated and functioning properly.
- Service the product at least once a year to avoid any product failures - The service timeline provided is based on normal use. More frequent servicing may be required for heavy usage.
- A working pressure of 350kPa is highly recommended to ensure the maximum up-time of the product.
- Regularly clean the product with a soft cloth with warm soapy water, wash off with warm water and dry off with a soft dry cloth, paying attention to removing the dust and contamination in the bends and joints is highly recommended.
- Abrasives, hard clothes, strong acids, and bleaches must be avoided when cleaning all GENTEC products.

Parts	Product Name
GPR9000	GPURE® REBEL 35mm ceramic cartridge
GPR9100	GPURE® REBEL stainless steel red & blue handle
GPR9200D	GPURE® REBEL stainless steel yellow & blue
AEM20-6,6L	Aerator M20 - 6.6lpm laminar flow light blue

Responsibly Sourced



Reduce Carbon Footprint

GENTEC is rejuvenating the product- no power, less maintenance and longer life.

Rejuvenation Program

To learn more about the rejuvenation program, please contact our customer service at info@gentecaustralia.com.au for more information.

Ethically and Environmentally Sourced

Please refer to GENTEC Business Ethics & Ethical Sourcing Policy at <https://gentecaustralia.com.au/terms-and-conditions/>



A: Unit 6, 20-28 Ricketty St,
Mascot, Sydney, NSW 2020

E: info@gentecaustralia.com.au

P: +612 9319 4422

F: +612 8088 7635

Gentec products come with a Manufacturer's Warranty. To ensure the validity of this warranty, Gentec products must be installed following the provided installation instructions and adhering to AS 3500, NCC Volume Three, relevant Australian Standards, and any local authority requirements applicable to the product. Additionally, water and electrical supply conditions must meet the appropriate national and/or state standards. Non-compliance with these provisions may void the warranty and impact product performance.

Note: The information provided is only a guide, actual product may differ. The information here should not be relied on without clarification with Gentec. Gentec reserves the right to make design changes at any time without notification.

*Subject to terms and conditions. For detailed warranty information, installation compliance, maintenance and cleaning guidelines, and other relevant details, please visit <https://gentecaustralia.com.au>

gentecaustralia.com.au