

USER MANUAL

CLEANLINE Lead Free DZR Brass Lever Tapware

- **Basin Sets** - CLLF10001, CLLF15001, CAPLF0001
- **Sink Sets** - CLLF10005, CLLF15005, CAPLF0005
- **Exposed Mixing Sets** - CLLF10010, CLLF15010, CAPLF0010, CLLF10012, CLLF15012, CAPLF0012, CLLF10015, CLLF15015, CAPLF0015
- **Recess Mixing Sets** - CLLF10035, CLLF15035, CAPLF0035, CLLF10040, CLLF15040, CAPLF0040
- **Control Valves** - CLLF10025 (H, C), CLLF15025 (H, C), CAPLF0025 (H, C), CLLF10030 (H, C), CLLF15030 (H, C), CAPLF0030 (H, C)
- **Washing Machine Taps** - CLLF10045 (H, C), CLLF15045 (H, C), CAPLF0045 (H, C)
- **Cistern Taps** - CLLF10050 (H, C), CLLF15050 (H, C), CAPLF0050 (H, C)
- **Spouts** - SLF1000, SLF1500, SLF2500W, SLF3000, SLF4000



Table of Contents	
Scope of Use	2
Technical Information	2
Product Images & Technical Drawings	4
Installation Steps	17
Water Quality	25
Cleaning & Maintenance	25
Troubleshooting	27
Responsibly Sourced	28

USER MANUAL

Scope of Use

Installation of all products should adhere to the manufacturer's guidelines, as well as comply with PCA, AS/NZS3500 standards, and any other relevant regulatory provisions. This product range complies with the Lead Free requirements of the National Construction Code Volume Three.

- **Installation:** Refer to the installation instructions included within this manual
- **Water quality:** Must prevent any debris from entering the waterway
- **Suitable for indoor and outdoor use:** Operations to confirm
- **Temperature recommendation:**
 - Single temperature up to: 50°C
 - Dual temperature up to: 80°C
 - Minimum temperature: 5°C
- **Mounting:** Wall, Bench or In line installation

Technical Information

Body Material	Body: Lead Free DZR Brass Handle: Brass
Cartridge	Ceramic Disk (Quarter Turn)
Cartridge Size	5/8"
Inlet	<ul style="list-style-type: none">• 15mm: Basin & Sink Sets, CAPLF0010, CAPLF0012, CLLF10010, CLLF10012, CLLF15010, CLLF15012, Recess Mixing Sets, Control Valves, Washing Machine & Cistern Taps• 15mm Male: CAPLF0015, CLLF10015, CLLF15015 & SLF1000• 15mm Female: SLF1500, SLF2500W, SLF3000 & SLF4000

Outlet	<ul style="list-style-type: none"> • Curved Fixed Spout: CAPLF0001 & CLLF15001 • Gooseneck Swivel Spout: CAPLF0005, CLLF10005, CLLF15005, CAPLF0010, CAPLF0015, CLLF10010, CLLF15010, CLLF15015, CAPLF0035, CLLF10035, CLLF15035, SLF1500 & SLF2500W • Fixed Parallel Spout: CAPLF0012, CLLF10012, CLLF15012, CAPLF0040, CLLF10040, CLLF15040, SLF3000 & SLF4000 • 20mm Male Outlet: CAPLF0045(H,C), CLLF10045(H,C) & CLLF15045(H,C) • 15mm Male Outlet: CAPLF0050(H,C), CLLF10050(H,C) & CLLF15050(H,C)
Flow Style	<p>Laminar Flow: Basin & Sink Sets, Exposed Mixing Sets, & Recess Mixing Sets</p> <p>Free Flow: Washing Machine & Cistern Taps</p> <p>Aerated Flow: Spouts</p>
Working Pressure	50kPa - 500kPa
Manufacturers Recommended Pressure	350 kPa
Working Temperature	5°C - 80°C
Finish	Chrome Plated
Servicing	Preventative Maintenance

USER MANUAL

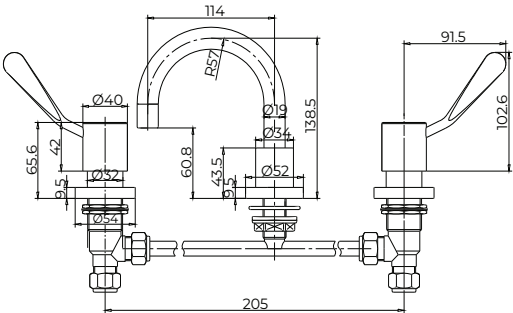
Product Images & Technical Drawings

BASIN SETS



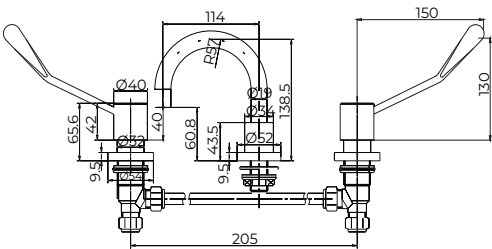
CLLF10001

Lead Free DZR Brass Hob Mounted 100mm Lever Basin Set



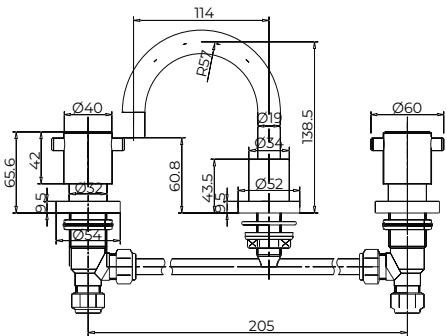
CLLF15001

Lead Free DZR Brass Hob Mounted 150mm Lever Basin Set w/ Curved Fixed Spout



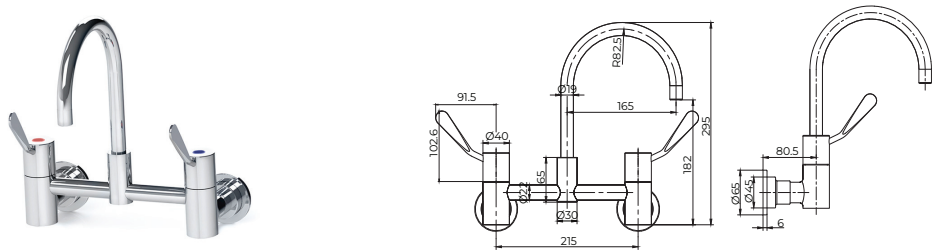
CAPLF0001

Lead Free DZR Brass Hob Mounted Capstan Basin Set w/ Curved Fixed Spout



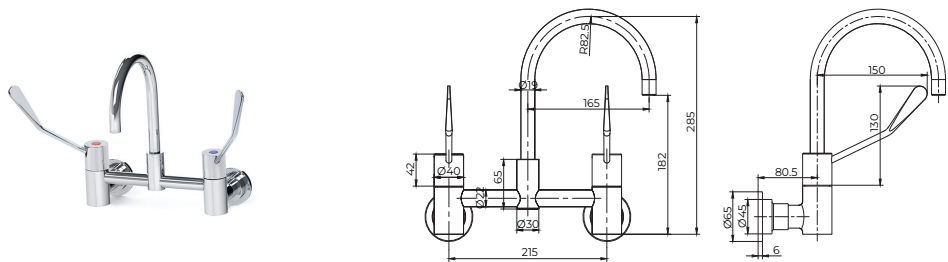
USER MANUAL

EXPOSED MIXING SETS



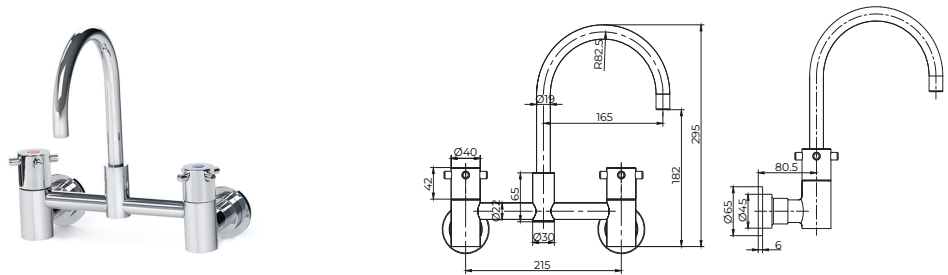
CLLF10010

Lead Free DZR Brass Wall Mounted 100mm Lever Exposed Mixing Set w/ Gooseneck Swivel Spout



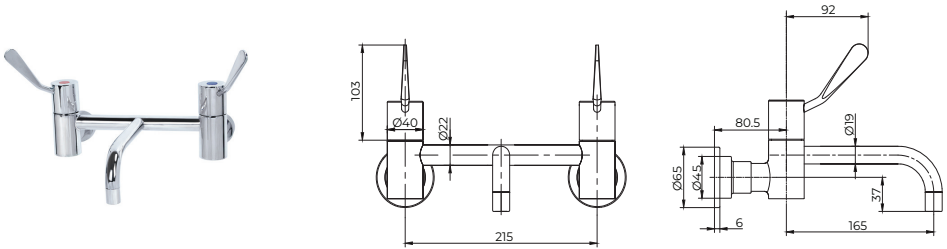
CLLF15010

Lead Free DZR Brass Wall Mounted 150mm Lever Exposed Mixing Set w/ Gooseneck Swivel Spout



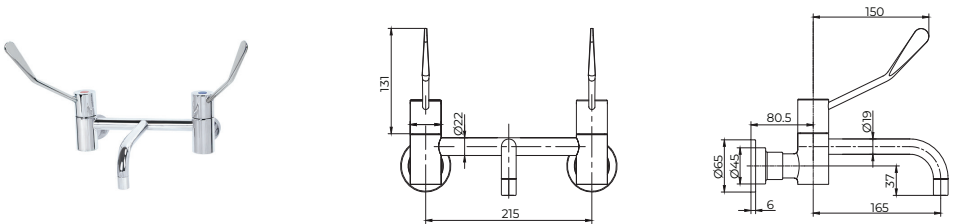
CAPLF0010

Lead Free DZR Brass Wall Mounted Capstan Exposed Mixing Set w/ Gooseneck Swivel Spout



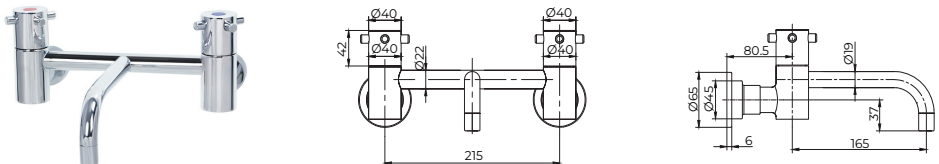
CLLF10012

Lead Free DZR Brass Wall Mounted 100mm Lever Exposed Mixing Set w/ Fixed Parallel Spout



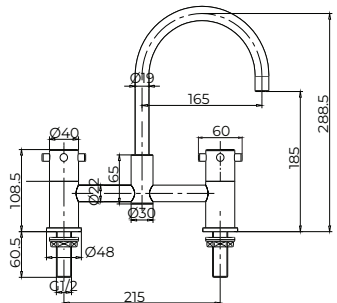
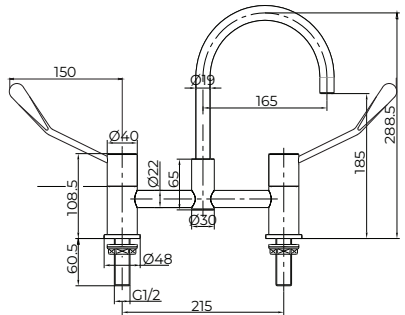
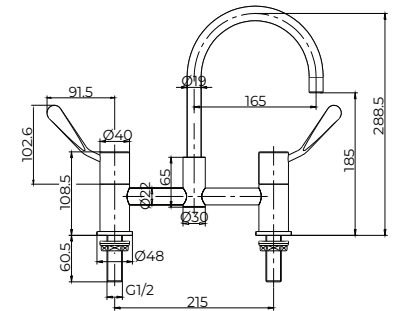
CLLF15012

Lead Free DZR Brass Wall Mounted 150mm Lever Exposed Mixing Set w/ Fixed Parallel Spout

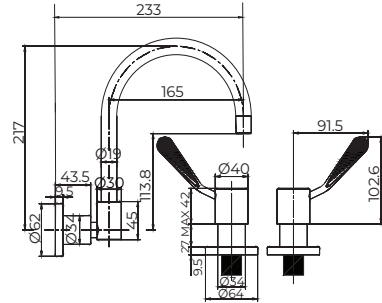


CAPLF0012

Lead Free DZR Brass Wall Mounted Capstan Exposed Mixing Set w/ Fixed Parallel Spout

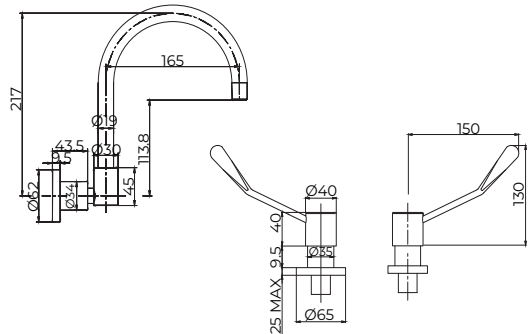


RECESS MIXING SETS



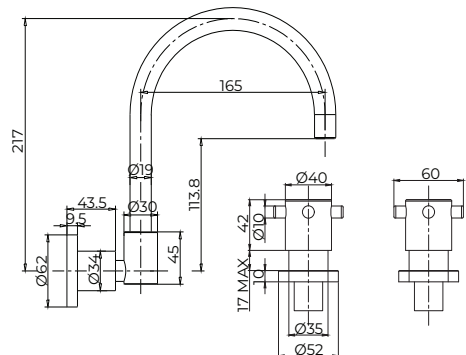
CLLF10035

Lead Free DZR Brass Wall Mounted 100mm Lever Recess Mixing Set w/ Gooseneck Swivel Spout



CLLF15035

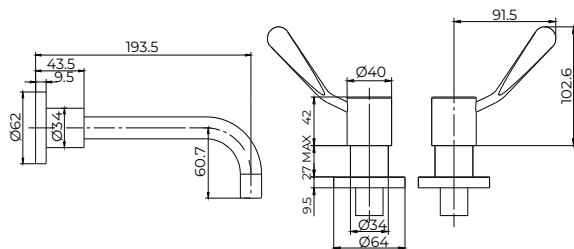
Lead Free DZR Brass In-Wall 150mm Lever Recess Mixing Set w/ Gooseneck Swivel Spout



CAPLF0035

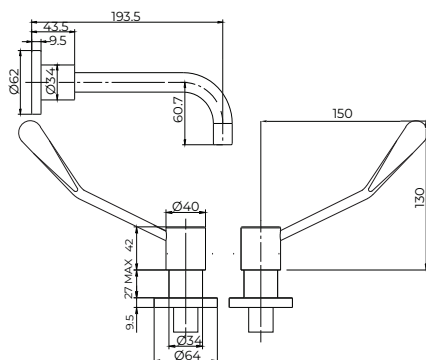
Lead Free DZR Brass Wall Mounted Capstan Recess Mixing Set w/ Gooseneck Swivel Spout

USER MANUAL



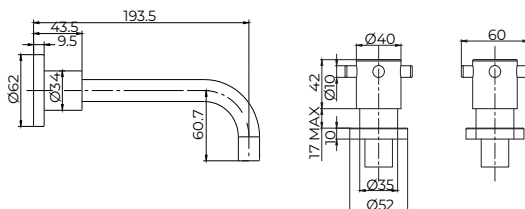
CLLF10040

Lead Free DZR Brass In-Wall 100mm Lever Recess Mixing Set w/ Fixed Parallel Spout



CLLF15040

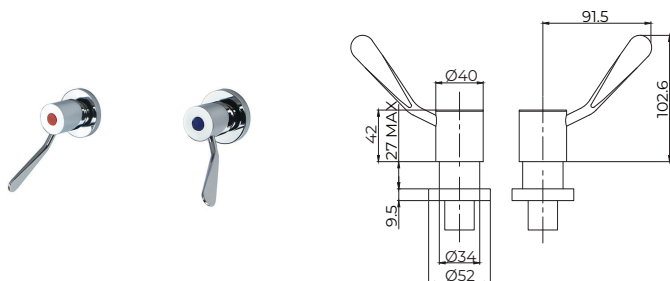
Lead Free DZR Brass In-Wall 150mm Lever Recess Mixing Set w/ Fixed Parallel Spout



CAPLF0040

Lead Free DZR Brass Wall Mounted Capstan Recess Mixing Set w/ Fixed Parallel Spout

CONTROL VALVES



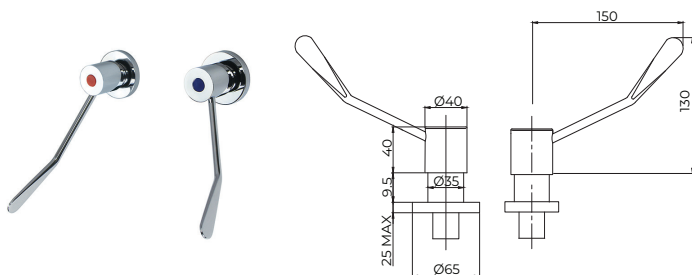
Individually Purchased

- CLLF10025H
- CLLF10025C

Red, Blue and Yellow indicators provided.

CLLF10025 (H, C)

Lead Free DZR Brass Wall Mounted 100mm Lever Control Valve



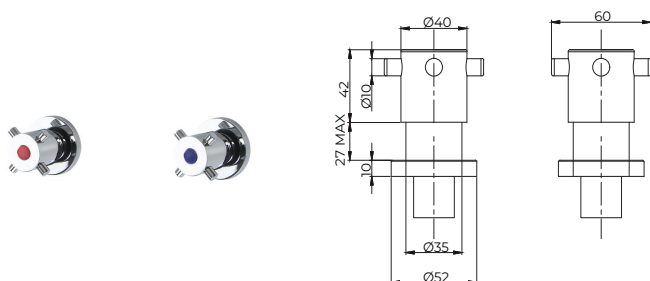
Individually Purchased

- CLLF15025H
- CLLF15025C

Red, Blue and Yellow indicators provided.

CLLF15025 (H, C)

Lead Free DZR Brass Wall Mounted 150mm Lever Control Valve



Individually Purchased

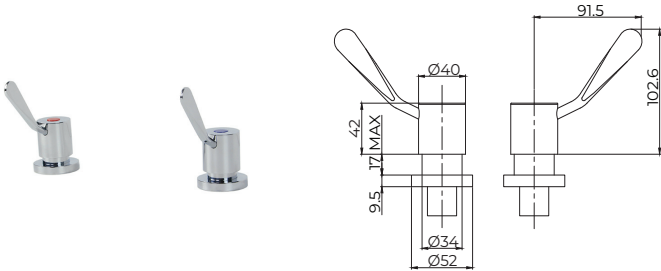
- CAPLF0025H
- CAPLF0025C

Red, Blue and Yellow indicators provided.

CAPLF0025 (H, C)

Lead Free DZR Brass Wall Mounted Capstan Control Valve

USER MANUAL



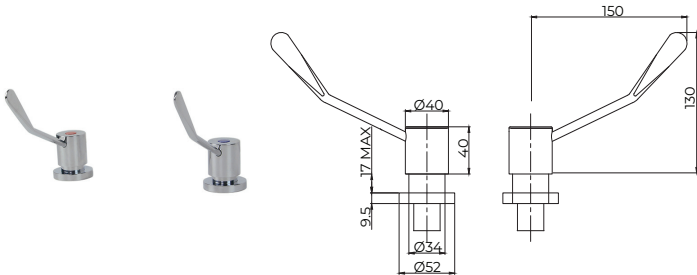
Individually Purchased

- CLLF10030H
- CLLF10030C

Red, Blue and Yellow indicators provided.

CLLF10030 (H, C)

Lead Free DZR Brass Hob Mounted 100mm Lever Control Valve



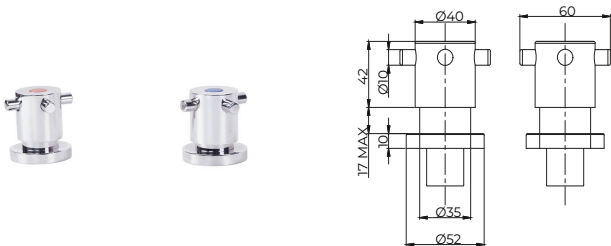
Individually Purchased

- CLLF15030H
- CLLF15030C

Red, Blue and Yellow indicators provided.

CLLF15030 (H, C)

Lead Free DZR Brass Hob Mounted 150mm Lever Control Valve



Individually Purchased

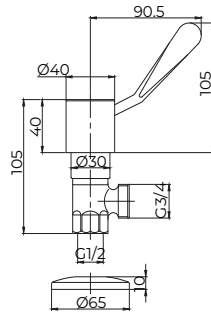
- CAPLF0030H
- CAPLF0030C

Red, Blue and Yellow indicators provided.

CAPLF0030 (H, C)

Lead Free DZR Brass Hob Mounted Capstan Control Valve

WASHING MACHINE TAPS



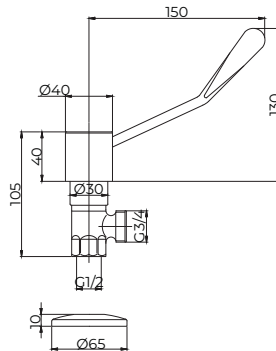
Individually Purchased

- CLLF10045H
- CLLF10045C

Red, Blue and Yellow indicators provided.

CLLF10045 (H, C)

Lead Free DZR Brass Wall Mounted 100mm Lever Washing Machine Tap w/ 20mm Male Outlet



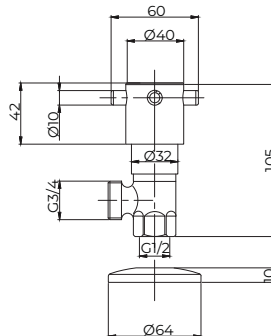
Individually Purchased

- CLLF15045H
- CLLF15045C

Red, Blue and Yellow indicators provided.

CLLF15045 (H, C)

Lead Free DZR Brass Wall Mounted 150mm Lever Washing Machine Tap w/ 20mm Male Outlet



Individually Purchased

- CAPLF0045H
- CAPLF0045C

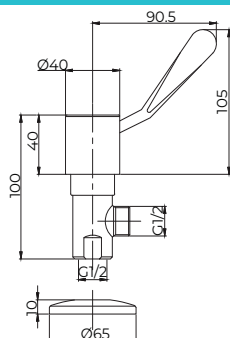
Red, Blue and Yellow indicators provided.

CAPLF0045 (H, C)

Lead Free DZR Brass Wall Mounted Capstan Washing Machine Tap w/ 20mm Male Outlet

USER MANUAL

CISTERN TAPS



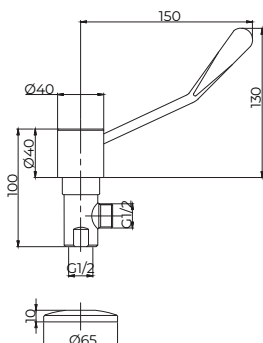
Individually Purchased

- CLLF10050H
- CLLF10050C

Red, Blue and Yellow indicators provided.

CLLF10050 (H, C)

Lead Free DZR Brass Wall Mounted 100mm Lever Cistern Tap w/ 15mm Male Outlet



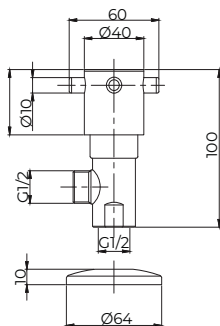
Individually Purchased

- CLLF15050H
- CLLF15050C

Red, Blue and Yellow indicators provided.

CLLF15050 (H, C)

Lead Free DZR Brass Wall Mounted 150mm Lever Cistern Tap w/ 15mm Male Outlet



Individually Purchased

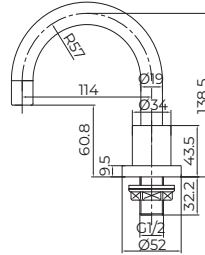
- CAPLF0050H
- CAPLF0050C

Red, Blue and Yellow indicators provided.

CAPLF0050 (H, C)

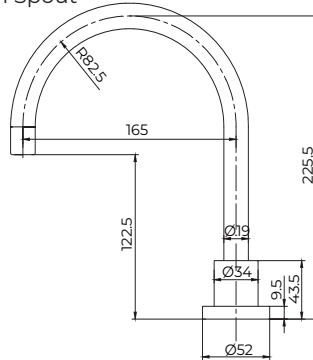
Lead Free DZR Brass Wall Mounted Capstan Cistern Tap w/ 15mm Male Outlet

SPOUTS



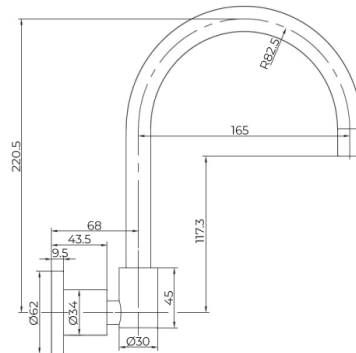
SLF1000

Lead Free DZR Brass Hob Mounted Fixed Basin Spout



SLF1500

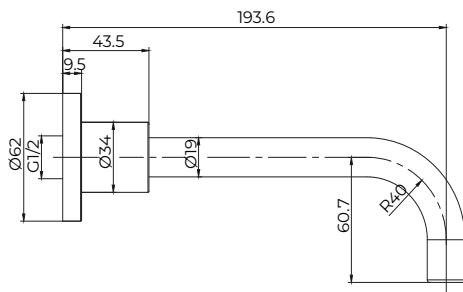
Lead Free DZR Brass Hob Mounted Swivel Gooseneck Sink Spout



SLF2500W

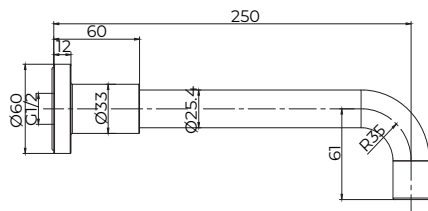
Lead Free DZR Brass Wall Mounted Swivel Gooseneck Sink Spout

USER MANUAL



SLF3000

Lead Free DZR Brass Wall Mounted Fixed Straight Spout



SLF4000

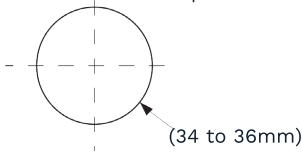
Lead Free DZR Brass Wall Mounted Fixed Straight Spout

Note: Dimensions are provided as a guide and are subject to manufacturing tolerances.

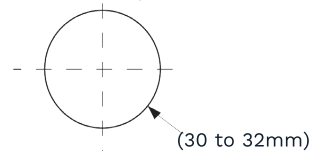
Installation Steps

BEFORE THE SET UP

- Drill a hole (34-36 mm) at the desired location for the tap installation.



- For CLEANLINE spout installation, cut out of 30 - 32 mm is required.
- Drill a hole (30 - 32 mm) at the desired location for the tap installation.



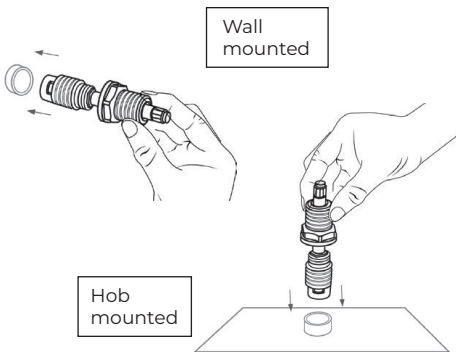
- Flush out new pipe work prior to connecting the new tapware
- Dismantling of the internal parts of the tap set is not recommended.

LEVER ACTION TAPWARE INSTALLATION STEPS

- Step 1. Unscrew the cover flange from the main body of the two piece cartridge. Then, unscrew the adjustable lock nut from the cartridge.

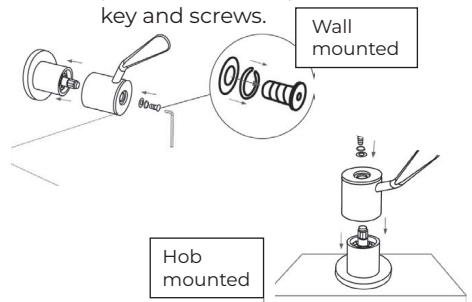


- Step 2. Screw the recessed body of the cartridge into the thread until it touches the seat.

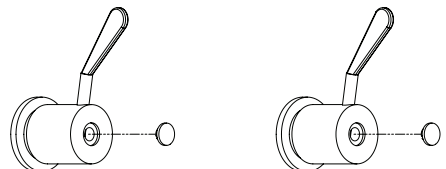


- Step 3. Attach the lever flange. Screw the adjustable locknut and tighten.

- Step 4. Tighten the handles in the desired position with the provided allen key and screws.



- Step 5. Insert the plastic indicator for cold, hot or warm.



USER MANUAL

CLLF10001, CLLF15001, CAPLF0001, CLLF10005, CLLF15005, CAPLF0005

INSTALLATION STEPS

- Step 1.

Ensure the dimensions distances for 3 tap hole set.
- Step 2.

Ensure hot and cold side cartridges.
- Step 3.

Attach lock nut and olive to the breech both hot and cold side and screw to hot and cold side cartridge housing, check distance match the hole spacing and tighten both nuts.
- Step 4.

Ensure breech spout fitting is facing up, remove back nut and washer.
- Step 5.

Attach brass lock nut and nylon washer to both hot and cold cartridge housing and spout fitting.
- Step 6.

From underneath fit breech set to the basin adjust brass lock nut to suit exposure of cartridge housing and spout fitting.
- Step 7.

Attach brass lock nut and nylon washer from top side, adjust and tighten.
- Step 8.

Remove spout from spout fitting, place cover flange over spout fitting and screw on spout attachment.
- Note :

Spout attachment grub screw face towards the back, replace the spout and tighten.
- Step 9.

Place cover flange over hot and cold cartridge housing and screw on spindle covers.
- Step 10.

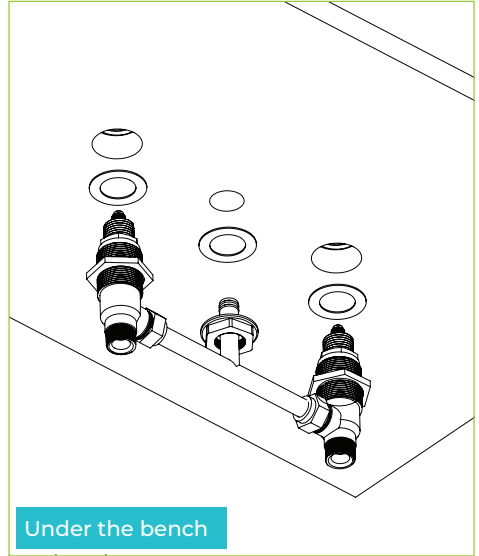
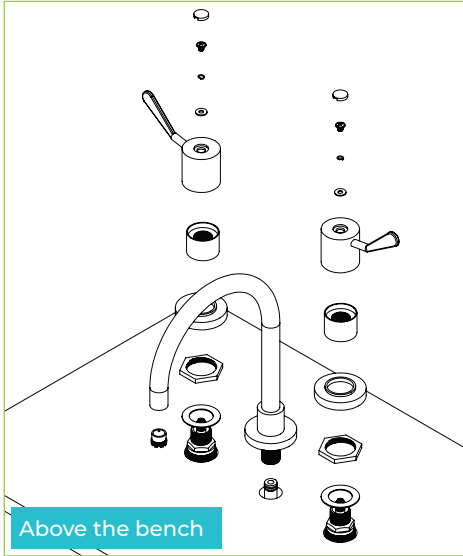
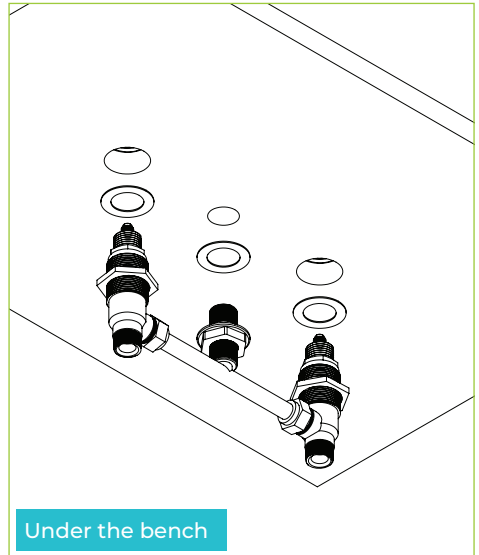
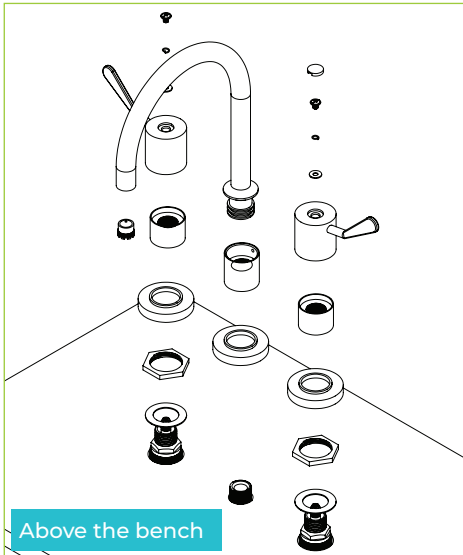
Attach handles and align the spline to suit the lever operation as per requirement.
- Step 11.

Attach hot and cold water supply, turn on and check for leaks.
- Step 12.

Verify operation, screw on washers and screws to the handle and place the appropriate colour indicator into handles.

CLLF10001, CLLF15001, CAPLF0001

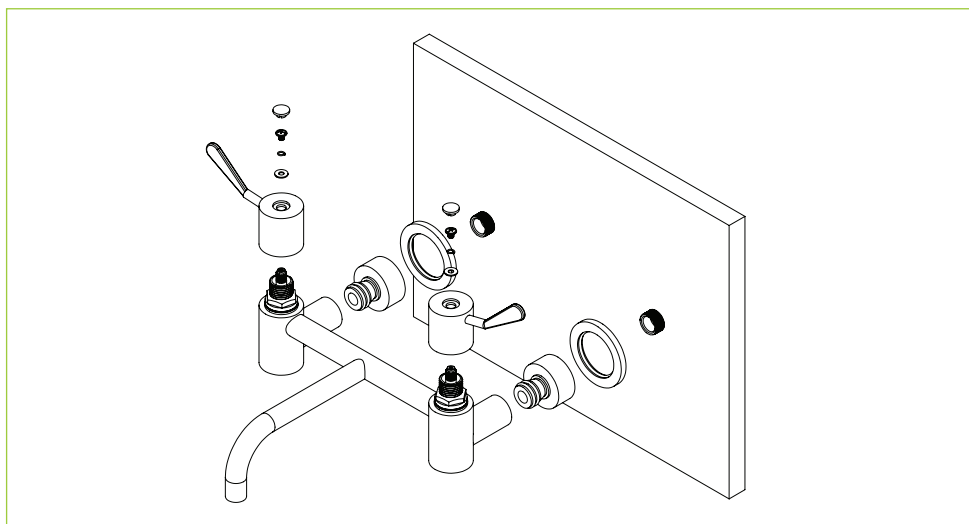
Note: Spout can be fastened to the basin first as the tee breech has O-Rings and requires a push fit into the spout.

CLLF10001, CLLF15001, CAPLF0001

CLLF10005, CLLF15005, CAPLF0005


USER MANUAL

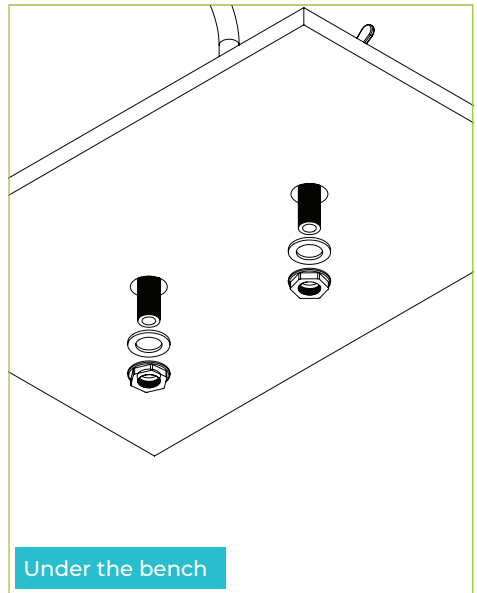
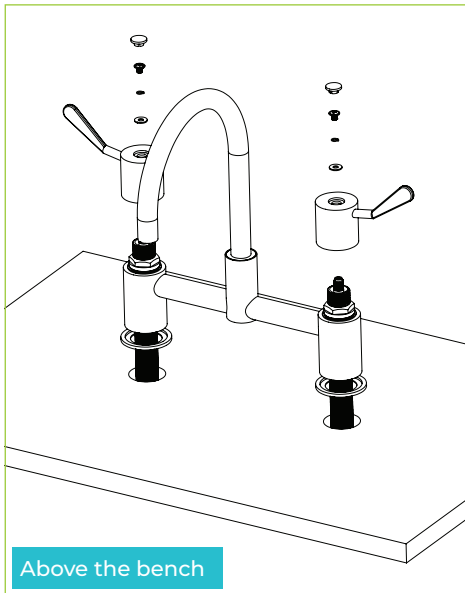
CLLF10010, CLLF15010, CAPLF0010, CLLF10012, CLLF15012, CAPLF0012 INSTALLATION STEPS

- | | |
|--|---|
| <p>Step 1. Apply adequate thread tape and screw on conical wall attachments to the wall fitting, adjust centre distance (215) to align with the exposed breech set.</p> <p>Step 2. Slide on cover flange and attach exposed breech set onto the wall attachment (slight adjustment maybe required).</p> <p>Step 3. Screw and tighten the breech set.</p> | <p>Step 4. Attach handle and align the spindle to suit the lever operation as per requirement.</p> <p>Step 5. Turn on water supply, check for leaks and verify operation.</p> <p>Step 6. Screw on washers and screws to the handle and place the appropriate colour indicator into the handles.</p> |
|--|---|



CLLF10015, CLLF15015, CAPLF0015 INSTALLATION STEPS

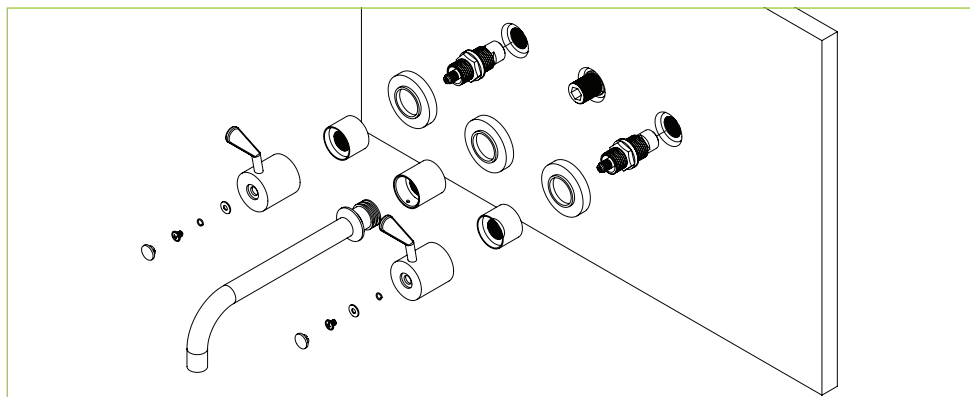
- Step 1. Ensure hob tap hole distance (215).
- Step 2. Remove washer and back nut from tap set and place the tap set into the hob then attach the washers and back nut and tighten.
- Note: Ensure the cover flange is still attached to tap set.
- Step 3. Attach handle and align the spindle to suit the lever operation as per requirement.
- Step 4. Attach hot and cold water supply. Turn on water supply, check for leaks and verify operation.
- Step 5. Screw on washers and screws to the handle and place the appropriate colour indicator into the handles.



USER MANUAL

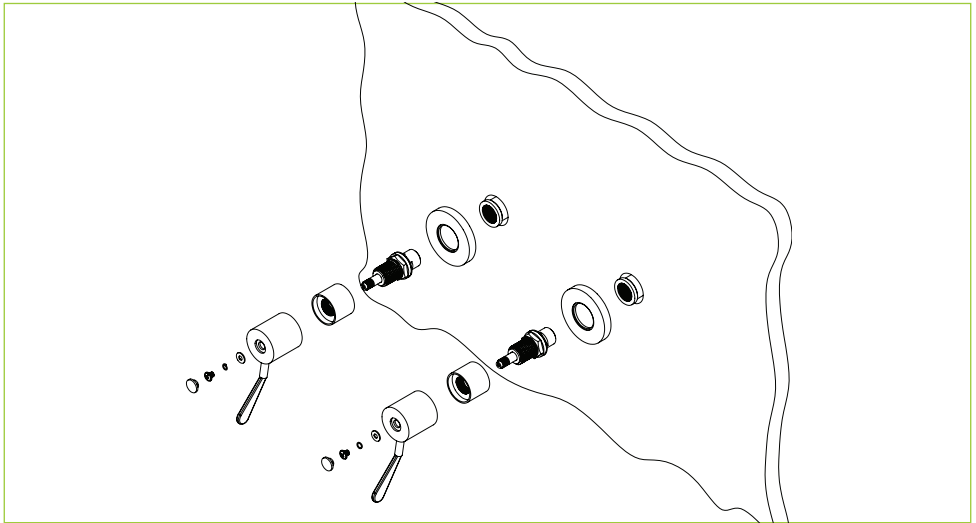
CLLF10035, CLLF15035, CAPLF0035, CLLF10040, CLLF15040, CAPLF0040 INSTALLATION STEPS

- | | |
|---|---|
| <p>Step 1. Remove spout from wall spout fitting and apply adequate thread tape to the wall fitting, place cover plate screw on wall spout fitting and replace spout and tighten.</p> <p>Step 2. Ensure hot and cold spindle and screw onto the wall fitting, refer to page 13 for instruction.</p> <p>Step 3. Place cover flange over spindles and screw on spindle covers.</p> | <p>Step 4. Attach handle and align the spindle to suit the lever operation as per requirement.</p> <p>Step 5. Turn on water supply, check for leaks and verify operation.</p> <p>Step 6. Screw on washers and screws to the handle and place the appropriate colour indicator into the handles.</p> |
|---|---|



CLLF10025PR, CLLF10030PR, CLLF15025PR, CAPLF0025PR, CLLF15030PR,
CAPLF0030PR INSTALLATION STEPS

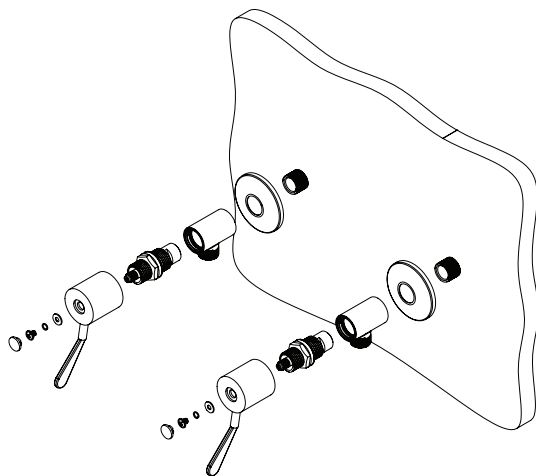
- | | |
|--|--|
| <p>Step 1. Screw in hot and cold spindles (ensure hot & cold). For operation of handle requirement, refer to page 13 for instructions.</p> <p>Step 2. Place cover flange and screw on spindle covers.</p> <p>Step 3. Attach handle and align the spindle to suit the lever operation as per requirement.</p> | <p>Step 4. Turn on water supply, check for leaks and verify operation.</p> <p>Step 5. Screw on washers and screws to the handle and place the appropriate colour indicator into the handles.</p> |
|--|--|



USER MANUAL

CLLF10045PR, CLLF15045PR, CAPLF0045PR, CLLF10050PR, CLLF15050PR, CAPLF0050PR INSTALLATION STEPS

- | | |
|---|--|
| <p>Step 1. Apply adequate thread tape to wall fitting.</p> <p>Step 2. Place cover flange and screw on the valve (ensure direction of outlet) and hot and cold valve.</p> <p>Step 3. Attach handle and align the spindle to suit the lever operation as per requirement.</p> | <p>Step 4. Turn on water supply, check for leaks and verify operation.</p> <p>Step 5. Screw on washers and screws to the handle and place the appropriate colour indicator into the handles.</p> |
|---|--|



Water Quality

Maximum chloride Cl⁻ level Guidelines in plumbing systems

	Cold Water	Hot Water
Grade 304L	200	50
Grade 316L	1000	250

When materials may be used in either hot or cold water lines, the guidelines for hot water should be used.

Within these guidelines at ambient temperatures and provided the pH >~6, any negative effect to stainless steel will be unlikely.

Note: Chlorides in water - where the density of the solvent (water) is 1 (which it is to within 0.1% at ambient temperatures), then mg/L = ppm.

For brass products, please ensure the chlorine and chloramines levels are not more than 0.4 ppm.

Please ensure that the water quality supplied to the fixtures meets safe drinking standards to prevent potential staining of the product.

Chlorine guidelines (not to be confused with chloride)

- 304L suitable for chlorine levels up to 2ppm.
- 316L suitable for chlorine levels up to 5ppm.
- Short term dosing, for example 25-50ppm, for sterilisation purposes of 24-48 hours acceptable if effectively flushed through afterwards.
- Sterilisation is essential during commissioning of potable water systems.

Reference: <https://www.assda.asn.au/component/content/article?id=271:chlorine-and-chloride--same-element,-very-different-effect>

Cleaning & Maintenance

To minimise downtime and maximise the functional life of the product, GENTEC recommends servicing your product at least every 12 months, under heavy use may need to be checked and serviced more often.

- The product must be handled carefully to avoid causing any physical damage.
- Use the product at least once every week to ensure all parts are kept lubricated and functioning properly.
- Service the product at least once a year to avoid any product failures - The service timeline provided is based on normal use. More frequent servicing may be required for heavy usage.
- A working pressure of 350kPa is highly recommended to ensure the maximum up-time of the product.
- Regularly clean the product with a soft cloth with warm soapy water, wash off with warm water and dry off with a soft dry cloth, paying attention to removing the dust and contamination in the bends and joints is highly recommended.
- Abrasives, hard clothes, strong acids, and bleaches must be avoided when cleaning all GENTEC products.
- Installation must be completed by a qualified and licenced plumber and adhere to AS/NZS3500 and manufacturer's recommendations.

USER MANUAL

Spare Parts Code	Name	Components Included
CL9010	Dress Flange to suit cleanline adaptors (C025)	1 x Dress Flange
CL9100	Push In Tee to Suit C002	1 x Push in Tee 2 x O-Rings
CLS9052	CLEANLINE Spout Hose Tap Adaptor	1 x Hose 1 x O-Ring
CAP	CLEANLINE Capstan handles only	Handle
CL10	CLEANLINE lever handle only 100mm	Handle
CL15	CLEANLINE lever handle only 150mm	Handle
CL9000C/H	CLEANLINE cartridge basin/sink qtr turn	Cartridge
CL9001C/H	CLEANLINE cartridge recessed qtr turn	Cartridge
CL9002C/H	CLEANLINE cartridge exposed pillar/bib qtr turn	Cartridge
S1100	Basin spout 114mm swivel aerated	Spout

Troubleshooting

Problem	Cause	How to Fix
Tap is not shutting off	<ul style="list-style-type: none"> • Debris • High pressure 	<ul style="list-style-type: none"> • Have you flushed the water line for a minimum of 1 minute before connecting the water • Have you installed the strainer and flow controller if provided • If debris has gone through the cartridge this is more than likely to be the cause. If the ceramic disc is broken or damaged, then the cartridge must be replaced • Ensure cartridge is seated in position • Have you checked to make sure the pressure is to manufacturer's recommendations and in line with the plumbing code
No water	<ul style="list-style-type: none"> • Isolating valve is off 	<ul style="list-style-type: none"> • Ensure the isolating valve is turned on
Handle is in the wrong direction	<ul style="list-style-type: none"> • Not fitted correctly 	<ul style="list-style-type: none"> • Ensure the cartridge is installed and the tap is in off position before installing the handle in position. Then locate where you want the handle to be located using the spline as the guide.
How do I fix the handle onto the spindle	<ul style="list-style-type: none"> • (GPCL Taps only) No fixing screw 	<ul style="list-style-type: none"> • If you have the correct indicator bush on the handle, then place the handle over the spindle and align the spline to the desired operating position and screw/turn the colour indicator using the key provided until it reaches the bottom. • Alternatively, you can use the key provided to secure the handle in position.
Issue with water flow	<ul style="list-style-type: none"> • Not enough water • Too much / little water 	<ul style="list-style-type: none"> • Check for blockage in the inlet where the strainer is fitted or is the aerator blocked with debris • Is the isolating valve fully open on both hot and cold • Have got these in a bank, if so, is the inlet pipes been sized correctly • Has the flow control been installed • High pressure exceeding the plumbing code will have an effect on the product must not exceed 500kPa

USER MANUAL

Problem	Cause	How to Fix
Not enough water	<ul style="list-style-type: none">• Taps installed in a bank or a trough	<ul style="list-style-type: none">• Ensure the main pipe size is sized correctly to ensure adequate water is able to service the taps installed in a bank or a trough
Cross connection of hot and cold	<ul style="list-style-type: none">• Is your pressure equal	<ul style="list-style-type: none">• Ensure you have adequate or equal pressure on both hot and cold side
The tap is not level on the wall	<ul style="list-style-type: none">• Is the issue with an exposed mixing set	<ul style="list-style-type: none">• This product comes with a concentric wall based which allow for adjustment on the wall, it must be levelled out during install
My spout is fixed	<ul style="list-style-type: none">• Swivel• 180 deg• Fixed	<ul style="list-style-type: none">• The spout allows for adjustment to have the three options in one design. By screwing in or unscrewing the screw, you can achieve the three options with the stainless range
How often do I need to service my tap	<ul style="list-style-type: none">• Prevent product failure	<ul style="list-style-type: none">• Service and maintenance of the main operating parts is recommended as this will prolong the life of the product

Responsibly Sourced



Reduce Carbon Footprint

GENTEC is rejuvenating the product- no power, less maintenance and longer life.

Rejuvenation Program

To learn more about the rejuvenation program, please contact our customer service at info@gentecaustralia.com.au for more information.

Ethically and Environmentally Sourced

Please refer to GENTEC Business Ethics & Ethical Sourcing Policy at <https://gentecaustralia.com.au/terms-and-conditions/>



A: Unit 6, 20-28 Ricketty St,
Mascot, Sydney, NSW 2020

E: info@gentecaustralia.com.au

P: +612 9319 4422

F: +612 8088 7635

Gentec products come with a Manufacturer's Warranty. To ensure the validity of this warranty, Gentec products must be installed following the provided installation instructions and adhering to AS 3500, NCC Volume Three, relevant Australian Standards, and any local authority requirements applicable to the product. Additionally, water and electrical supply conditions must meet the appropriate national and/or state standards. Non-compliance with these provisions may void the warranty and impact product performance.

Note: The information provided is only a guide, actual product may differ. The information here should not be relied on without clarification with Gentec. Gentec reserves the right to make design changes at any time without notification.

*Subject to terms and conditions. For detailed warranty information, installation compliance, maintenance and cleaning guidelines, and other relevant details, please visit <https://gentecaustralia.com.au>

gentecaustralia.com.au