

Reliable, Durable, and Water-Efficient: GPURE® FLOSTOP Stainless Steel Timed Flow Taps - GPT1000W & GPT1500



SS304

Stainless Steel
ZERO* Lead



Water Saving



Soft-Close
Operation



Durable &
Anti-Vandal

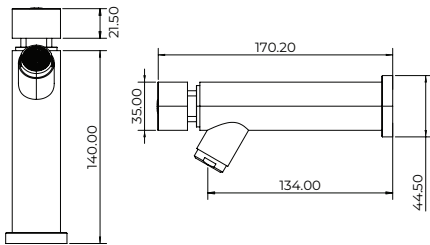
Introducing GENTEC's Latest Innovation in Timed Flow Tapware

Designed for education, commercial and public environments, the new GPT1000W and GPT1500 deliver the perfect combination of performance, durability, and water efficiency. Made from Stainless Steel ZERO* Lead, they feature a hydraulically operated soft-close system, a robust anti-vandal design, and a 6-star WELS rating. These taps provide a seamless user experience while optimizing water usage.

Upgrade your facilities with GENTEC's latest Timed Flow Tapware—built to last, designed to perform.

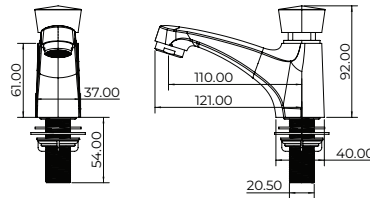


GPURE® FLOSTOP Stainless Steel Timed Flow Taps - GPT1000W & GPT1500



GPT1000W

Zero Lead Stainless Steel 304 Wall Mounted Single Temperature Timed Flow Bib Tap



GPT1500

Zero Lead Stainless Steel 304 Hob Mounted Single Temperature Timed Flow Pillar Tap

Technical Information

Body Material:
Stainless Steel (SS304)

Cartridge:
Timed Flow (Hydraulic)

Inlet:
GPT1000W: 1/2" Female;
GPT1500: 1/2" Male

Outlet:
GPT1000W: A18-5L;
GPT1500: Aerated Flow

Flow Regulator:
GPT1000W: A18-5L;
GPT1500: Default 40.2052.000 - Aerated Flow 6LPM

Run Time:
5 seconds (+/- 2)

Working Pressure:
150kPa - 500kPa

Manufacturers Recommended Pressure:
350 kPa

Working Temperature:
Min. 5°C - Max. 45°C

Finish:
Polished Stainless Steel

Feature	Benefit
Soft-close, hydraulically operated time flow	Suitable for all markets, offering smooth shut-off and water-saving functionality
Designed to be durable and anti-vandal	Built to withstand heavy use in public areas
Supplied with inlet strainer and flow controller	Protects internal components from debris and optimises water efficiency.
Yellow & Blue button indicators supplied	Supports user safety by providing clear temperature identification
6-star rated	Water saving