

Duralab - Gas Tapware Installation Instructions

INSTALLATION INSTRUCTIONS FOR GAS VALVES.

PRODUCT RANGE

BENCH PRODUCTS: DURA301, DURA302, DURA303, DURA304.

WALL PRODUCTS: DURA6731, DURA6833, DUR6831, DURA6838.

PANEL PRODUCTS: DURA1713

PRODUCT REQUIREMENTS

Gas installation to be carried out in accordance AS/NZS5601 (current edition) and any other regulations in force.

The valve is certified to operate at a maximum pressure of 7kPa for Natural Gas. Valves should be connected to either copper or steel pipe work as applicable. The flow rate for the valve is 0.6 m³/h (air) at 125 Pa pressure drop, temperature limitations are between 0deg and 60degC.

FITTING

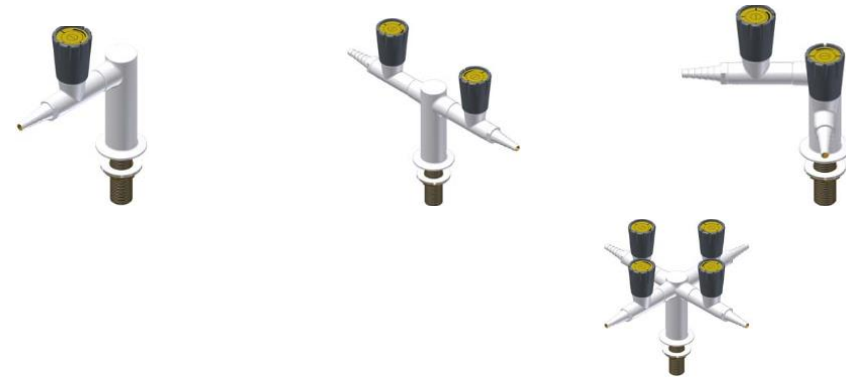
Male assemblies require a 22mm diameter hole drilling through the work surface. Maximum surface thickness should not exceed 35mm. The assemblies should be secured using the male shank, star washer and back-nut provided.

Panel mounted valves require a 36mm diameter hole drilling through a 1 to 3 mm panel surface. The assemblies should be secured using the thrust washer and the locknut. Install the nut cover, handwheel connector, handwheel and bolt before inserting the label and the cover.

Care should be taken to ensure that the valve assembly is in the correct location and orientation

TECHNICAL PICTURES

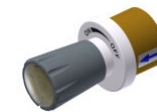
Bench products



Wall products



Panel products



before drilling.

CONNECTIONS

Male assemblies provided with a BSP ½" connection shank should not be shortened.

Panel mounted valves are provided with a BSP ¼" male connections.

Suitable threaded connectors should be fitted to enable connection to the male thread. Assembly to be installed using BSP flare fitting supplied by the installing contractor, must be installed in accordance WITH AS5601.

TESTING

All "Gentec" products are pressure tested before dispatch from the factory All gas installations and testing of the final installation must be performed by a Licensed / qualified Plumber/ Gas fitter/ Engineer in accordance authority requirements.

MAINTENANCE

All gas appliances/control valves should be inspected and tested annually.

For servicing please contact Gentec, Thread used on inlet with flared fitting, assembled and fixed using a back nut, check for leaks. The valve is not intended to be serviced.

OPERATION

To operate "Gentec" gas valves, user must push and turn handle left for more flow and right for automatic shut off.

PRODUCT WARRANTY/SERVICING

Your valve has a 2 years manufacturer's warranty and a 10 years Cartridge warranty from the date of purchase for domestic applications, and a 2 years warranty for commercial installations.

Our Products come with guarantees that cannot be excluded under the Australian Consumer Law. You are entitled to a replacement or refund for a major failure and compensation for any other loss or damage. You are also entitled to have the Product repaired or replaced if the Products fail to be of acceptable quality and the failure does not amount to a major failure.

NOTE: product must be installed in accordance with AS5601, failure to comply will void any warranty

FOR AFTER SALES SERVICE, PLEASE CONTACT YOUR LOCAL DEALER OR GENTEC CUSTOMER SUPPORT ON:

+61 2 93194422 or info@gentecaustralia.com.au

www.gentecaustralia.com.au