

INSTALLATION MANUAL

FLOSTOP VALVES

Knee Operated Valve

TFT3500

Foot Operated Valve

TFT3600

Straight Shower Valve

TFT1010

Adjustable Shower Valve

TFT1010ADJ

Shower Control Valve

TFT1015KIT

Shower Mixer Control Valve

TFT1016KIT



Contents

Product Features	3
Product Range	4
Technical Drawings	6
Unit Components	8
Wall Mounted Showers Installation	10
Outlet Installation	12
Knee Valve Installation	13
Pedal Valve Installation	14
Single Temp Straight Valve	15
Time Adjustment Instructions	16
Maintenance	17
Product Warranty	18

Flostop Valves by Gentec

The FLOSTOP Soft close, timed flow product range is anti-vandal and has been designed to withstand heavy use in any commercial application for over 1,000,000 cycles of operation.

The hydraulically operated time flow tapware will enhance your facility by providing high-level hygiene and extensive energy and water savings. Various fixed time delays are available. As well as an adjustable time delay of 0 - 40seconds is supplied with some products.

Infection control features	<ul style="list-style-type: none"> ▶ 12 - 16 second timed flow run time complies with food preparation regulations
Installation and servicing	<ul style="list-style-type: none"> ▶ For durability please ensure to install all parts including strainers, flow regulators
Usage features	<ul style="list-style-type: none"> ▶ Hands Free products available. ▶ Adjustable timing via adjustment screw for 0 - 40 seconds
Application	<ul style="list-style-type: none"> ▶ Food commercial premises, healthcare accessible areas, child care facilities, sports facilities.



WM 74513
AS/NZS 3718
ApprovalMark

Product Range

TFT3600 / TFT3600 KIT

FLOOR / WALL MOUNTED FOOT OPERATED VALVE

* KIT WITH SPOUT AVAILABLE



TFT1010

SINGLE TEMPERATURE STRAIGHT VALVE



TFT1010ADJ

SINGLE TEMPERATURE STRAIGHT VALVE WITH ADJUSTABLE CARTRIDGE



TFT3500 / TFT3500KIT

KNEE OPERATED VALVE

* KIT WITH SPOUT AVAILABLE



TTFT1016KIT

SHOWER MIXER VALVE WITH IN-WALL STAINLESS STEEL BOX.



TFT1015 KIT

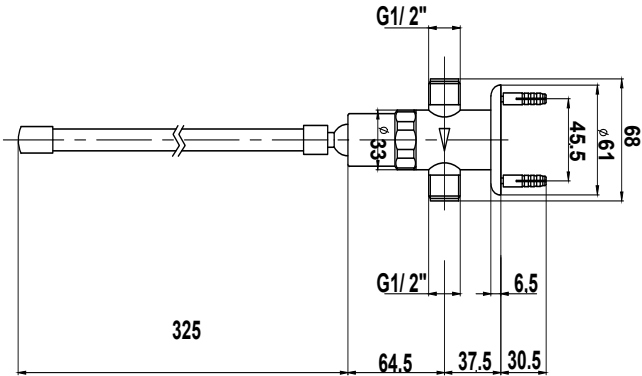
SINGLE TEMPERATURE SHOWER VALVE WITH IN-WALL STAINLESS STEEL BOX.



Technical Drawings

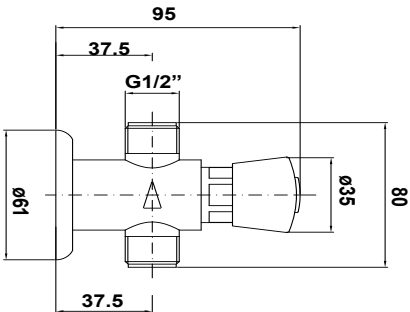
TFT3500

KNEE OPERATED VALVE



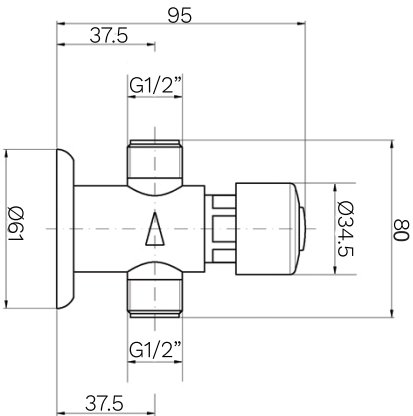
TFT1010

SINGLE TEMPERATURE STRAIGHT SHOWER VALVE



TFT1010ADJ

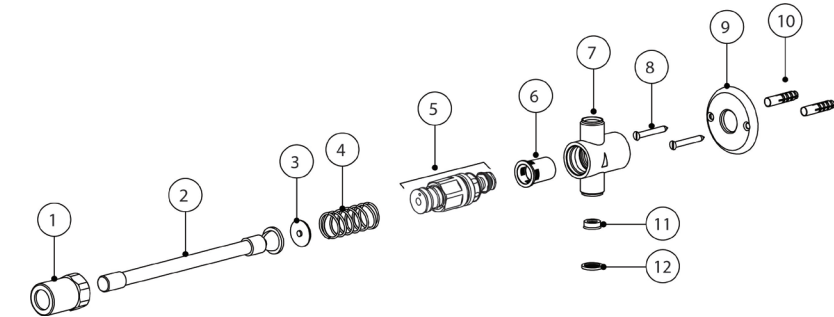
SINGLE TEMPERATURE STRAIGHT SHOWER VALVE WITH ADJUSTABLE CARTRIDGE



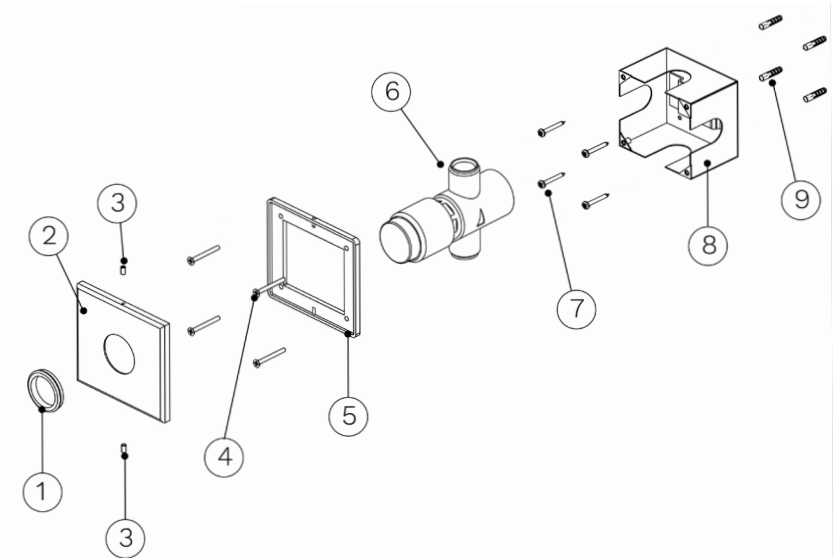
*Pressure exceeding 450 kPa will void warranty

Unit components

KNEE OPERATED VALVE



TFT1015KIT



*Pressure exceeding 450 kPa will void warranty

KNEE OPERATED VALVE

No.	Description	Qty
01	Headvalve Holder	1
02	Plastic Lever	1
03	Flat Brass Spacer	1
04	Spring	1
05	Cartridge	1
06	Flow Cup	1
07	Valve Body	1

No.	Description	Qty
08	Fixing Screws	2
09	Flange	1
10	Wall plugs	2
11	Strainer	

Important Note

For the Maintenance Instructions see Pag. 17.

STRAIGHT SHOWER VALVE TFT1015KIT

No.	Description	Qty
01	Plastic Cover ring	1
02	Cover Plate	1
03	Grub Screws	2
04	Fixing Screws.	4
05	Adjustment Cover.	1
06	Mixer Body	1
07	Wall fixing Screws	4
08	InWall Box	1
09	Wall Plug	4

OPERATION REQUIREMENTS

Pressure / Temperature	Value
Min Continuous Flow Working Pressure	150kPa
Max Continuous Flow Working Pressure	450kPa
Optimum Flow Working Pressure	350Kpa
Max Static Pressure	450kPa
Min Continuous Working Temperature	5°
Max Continuous Working Temperature	50°

***Regular service must be carried out on the product to avoid product failure.**

Installation Instructions

WALL-MOUNTED SHOWER KITS

TFT1015 KIT, TFT1016 KIT

Before connecting water to the valve, ensure to flush the line and remove all debris from the line.

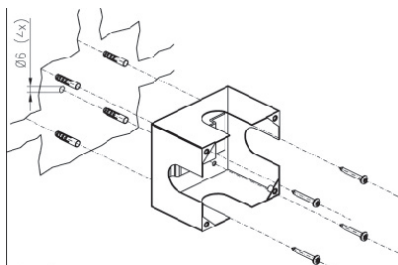
All fixtures must be installed with isolation valves and accessible.

Working pressure must be between 150 and 450kPa.

For direct ablation Temperatures will need to be between 7°C to 45°C.

Wall mounting the product

1. Mount the stainless box into the wall firmly.

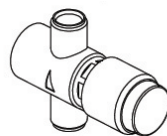


2. Screw the main valve into the box and locate the outlet in the vertical position.

Product performs best at 350kPa.

Note: Ensure the button on the valve body is aligned with the water flow direction. (Pointing to the water outlet)

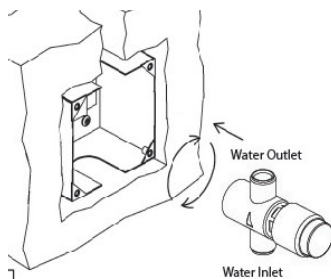
Water Outlet



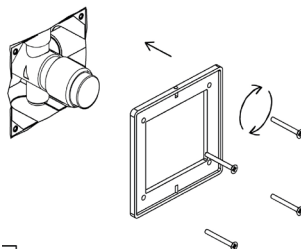
Water Inlet

3. All screwed fittings connected to the valve must be easily dismantled so the main valve can be removed.

It is recommended to use flat union connections.

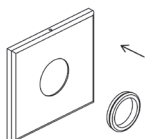


4. Ensure to finish the stainless steel box flush with **the finished wall** this includes tiles, waterproofing, etc. Please ensure the in wall components are sealed and waterproofed to avoid water / moisture penetration

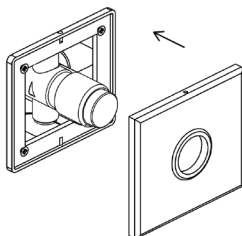


***Use 350Kpa pressure reduction valve for extended life and better operation**

5. To finish off the installation, fit rubber to the stainless-steel front cover plate



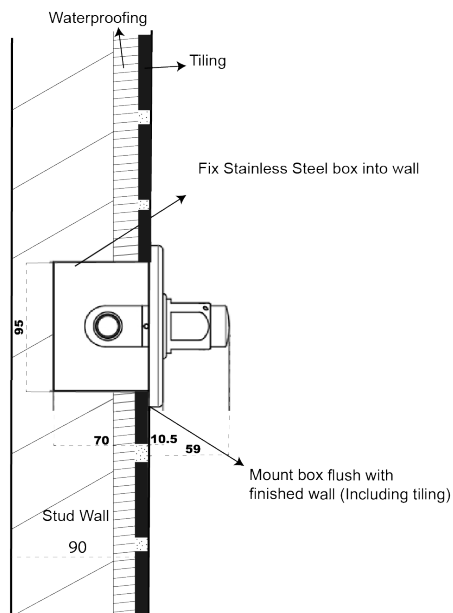
6. Push the black frame on to the stainless box using 4 screws provided and tighten against the wall. Ensure an appropriate sealant is applied to both the box cover and lid to avoid water penetration



7. The stainless-steel cover plate comes with two grub screws. Push the cover plate over the button against the black cover seal, then screw the two grub screw in place to secure the stainless steel cover plate.
8. For the TFT1016KIT only, screw in levers for hot and cold controls and use Lockseal to secure. Connect hot (left) and cold (right) water on each side of the mixer.
- **Compliance**

The mixer handle is a blender valve only and not a thermostatic mixing valve.

Wall Installation Diagram



Important note

We recommend to have the shower mounted at 2.1 meters high. Gentec offers two options for shower heads fixed head and adjustable head

Do not pressurise the product above 450kPa. If pressure testing is done above 450kPa, excessive pressure can damage the operation of the timing.

***Regular service must be carried out on the product to avoid product failure.**

Installation Instructions

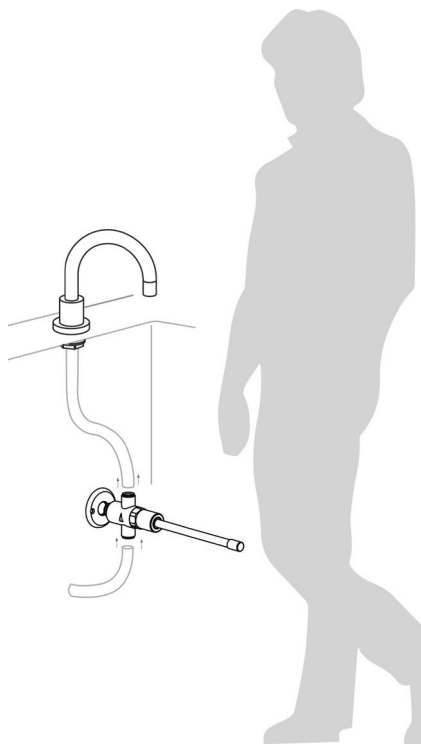
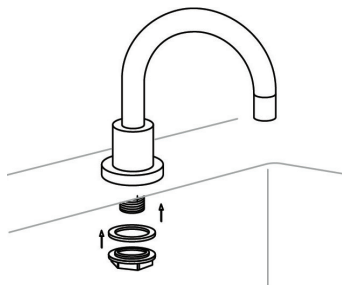
Important Note for all units

Tapware must be installed to the requirements of AS/NZS 3500 by a qualified plumber. Your mixer comes to you already factory assembled and tested. We do not recommend the dismantling of any internal part of the mixer. The mixers are factory tested and sealed so as to give the best performance.

- A. Please flush out new pipe work prior to connecting the new tapware.
- B. All tapware should be installed with isolation valves.
- C. The valves are suitable for high pressure applications where cold water supply pressures are at a minimum of 150Kpa and a maximum of 450 Kpa

Outlet installation instructions for TFT3500KIT and TFT3600KIT

1. Allow for a 25mm hole for the water outlet.
2. Remove the back nut and washers from the outlet.
3. Insert the 15mm thread through the basin/sink then fix the back nut and washers in place.
4. Connect the flexible hose from the valve outlet to the spout inlet. Connect the water supply to operate.



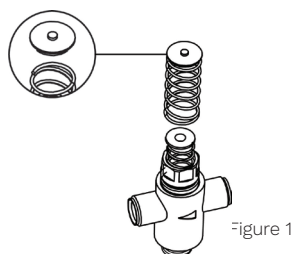
***Use 350Kpa pressure reduction valve for extended life and better operation**

KNEE OPERATED VALVE

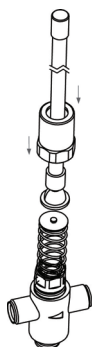
TFT3500, TFT3500KIT

Knee Valve Installation

1. Place the flat brass nipple spacer on the spring. **Ensure the nipple is facing towards the knee valve wand**



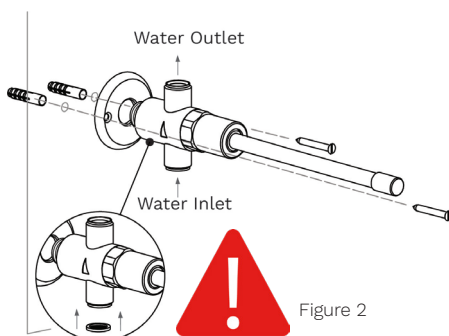
2. Slide the head valve holder over the knee valve wand and screw on to the cartridge.



Mounting the knee valve to the wall:

3. Screw on the knee valve body to the flange.
4. Use the 2 holes on the flange to mount the knee valve to the wall.

5. Screw the flange and knee valve into place using the necessary screws to mount firmly onto the wall.



Ensure the arrow on the knee valve body figure (2) is facing up when connected to the water inlet and outlet

6. Place the filter in the water inlet and use flat union connectors to prevent damaging the strainer.
7. **Do not over-tighten the cartridge.**

Important Information

Ensure the brass nipple spacer (figure 1) is fitted securely facing the right side to prevent any leaking

Product should be mounted free of obstructions.

Do not modify the product.

***Regular service must be carried out on the product to avoid product failure.**

Installation Instructions

FOOT OPERATED VALVES

TFT3600

Foot Valve Installation

Choose the position that suits better (floor or wall mounted)

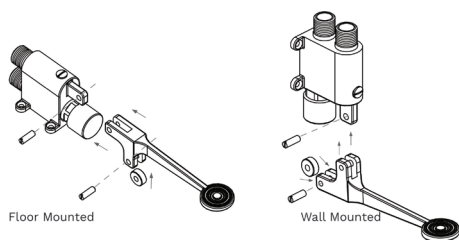


Figure 1

Convert the pedal valve from floor mounted to wall mounted:

1. Remove the screw on the pedal lever.
2. Reverse the pedal lever as shown in Figure 1.
3. Mount the unit securely (floor or wall) to prevent any movement while operating the valve

Important note

We recommend to have the Foot Pedal mounted at no higher than 70mm high from the floor. (Figure 2)

Ensure the inlet strainer (figure 3) is fitted securely.

4. Use the 4 mounting screws to screw the pedal valve into place.

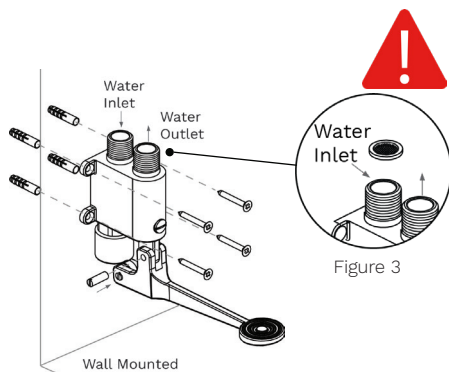
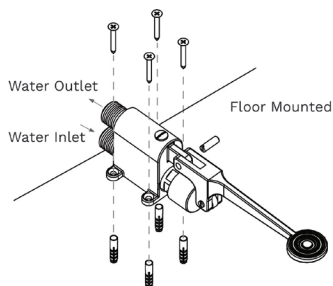


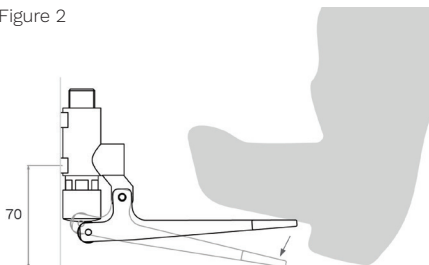
Figure 3



How to adjust timing:

For time delay adjustment see page 17

Figure 2

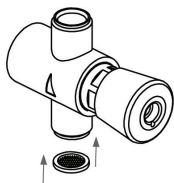


***Use 350Kpa pressure reduction valve for extended life and better operation**

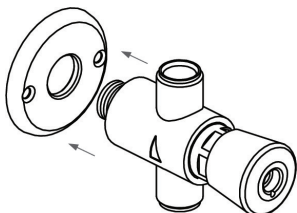
SINGLE TEMPERATURE STRAIGHT VALVES

TFT1010, TFT1010ADJ

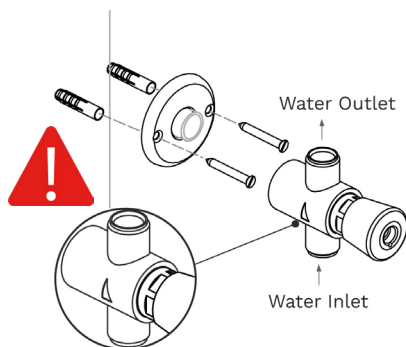
1. Flush the new pipe prior to installation
2. Install the strainer.



3. Screw the valve body to the flange



4. Measure and mark the two holes using the fixing flange for drilling into the wall.



5. Ensure the arrow on the valve body is facing the direction of the outlet.

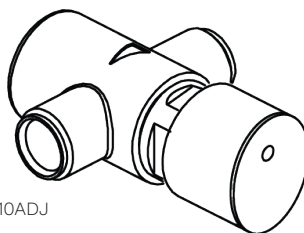


6. Connect the water inlet and outlet.
7. Push into the button the colour indicator for hot or cold water.

Note

The difference between the TFT1010 and the TFT 1010ADJ is the cartridge.

The TFT 1010 ADJ has an adjustable cartridge. For the time adjustment instructions see pag. 17



TFT1010ADJ

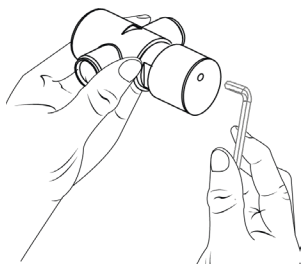
***Regular service must be carried out on the product to avoid product failure.**

Time Adjustment

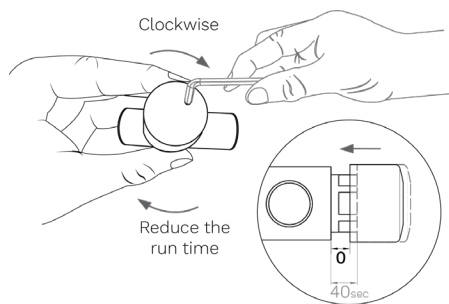
ADJUSTABLE CARTRIDGE (0 TO 40 SECONDS)

This option is suitable for the following references: TFT1010ADJ, TFT3600, TFT1015KIT, TFT1016KIT

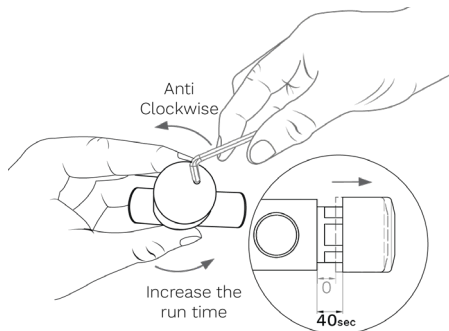
- To adjust the timing you will need to use the allen key provided (1.2mm)



- Turning the screw in clockwise will reduce the run time.



- Turning the screw anti clockwise will increase the run time



Fixed Timing Adjustment

Please contact GENTEC before changing flow cups

Our Flostop range is available in the following fixed timing options

These options are available upon request and are factory installed. *Refer to the chart below

Changing the flow cup yourself may void the product warranty.

FCC.	Description
TFT9050	Flow cup 4 - 6 Sec
TFT9052	Flow cup 8 - 12 Sec
TFT9053	Flow cup 12 - 16 Sec
TFT9054	Flow cup 40 Sec

***Use 350Kpa pressure reduction valve for extended life and better operation**

SPARE PARTS

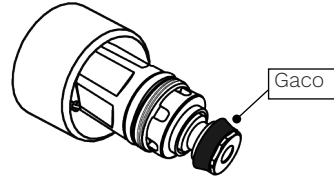
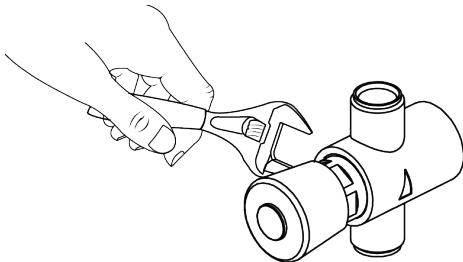
Code	Description
TFT9010	Cartridge to fit TFT1010
TFT9069	Adjustable Cartridge
TFT9300	Knee Operated Wand
TFT9304	Knee Operated Cartridge
TFT9050	Flow Cup 4 - 6
TFT9052	Flow Cup 8 - 12
TFT9053	Flow Cup 12 - 16
TFT9054	Flow Cup 40 sec

O Ring Kit service

For the following steps, a qualified plumber must be in charge of the maintenance and handling of the tapware in order to keep product Warranty. The damage on parts after dismantling a product would not be covered by the warranty.

First start by shutting off the main water supply.

1. Remove the head valve using a shifter on the flats and remove the cartridge.



2. Undo the stopper
3. Set aside the crown ring
4. Set aside the head valve from the stem
5. Remove the washer Gaco from the head valve and replace with the new washer gaco.
6. Remove the Gaco from the stopper and replace it with the new washer Gaco
7. Remove the "O" Ring and replace it with the new "O" Ring
8. Remove the "o" Ring and replace it with the new "O" Ring
9. Using the existing crown ring place it back into the head valve
10. Place the stem through the head valve
11. Apply a drop of Loxeal to the thread of the stem
12. Replace the stopper, ensure the "O" Ring is in place, then tighten the stopper. Do not overtighten.
13. Fit the handle and cartridge back into the body and tighten.

Do not overtighten.

Important note

Over tightening might cause the crown ring to move, this could cause malfunction of the cartridge.

Warranty

GENTEC PRODUCT QUALITY WARRANTY

You have purchased a quality product from GENTEC Australia Pty Ltd ABN 581 552 50285). This product is covered by a 10 year replacement product warranty and a **24 month warranty on spare parts and labour**.

1. Warranty

1.1 This warranty is given by the Principal subject to the terms and conditions set out in this document.

1.2 The Principal warrants that the Goods are free from defects in materials and workmanship for the time period specified for the Goods in the Product Index. If Your Goods are found to be defective within that time, we will repair or replace the Goods.

1.3 This warranty does not cover accidental damage, wear and tear, consequential or incidental loss, or any damage caused by You, including if the Goods were not installed in accordance with the manufacturer's instructions, the PCA and AS/NZS3500.

1.4 You are required to service the Goods regularly. Failure to do so may cause this warranty to be voided.

2. Procedure

2.1. If you consider that the Goods are defective, you must cease use of the Goods immediately and provide notice to the Principal in writing as soon as is reasonably practicable after discovering the alleged defect.

2.2. The notice referred to in clause 2.1 must state the following:

2.2.1 the alleged defective Goods;

2.2.2 what the alleged defects are;

2.2.3 where the Goods are located;

2.2.4 when the Goods were purchased

2.2.5 the invoice number relating to the purchase of the Goods;

2.2.6 whether the main water to the unit is able

to be turned off;

2.2.7 include pictures of the alleged defect; in a reasonable time.

2.2.8 completed credit card authorisation in the form set out in Schedule 2 to these conditions accepting liability in accordance with clause 2.6 if the product is not faulty.

2.3 The Principal will, on receipt of a notice in accordance with clause 2.2, issue a case number for the investigation of the alleged defective Goods.

2.4 In the event that the Goods are to be returned to the Principal You may bring or send them to one of our service locations or sites. If the cost of returning the goods to us is significant because of the nature of the failure or because of the size or height of the goods, the Principal will collect the goods from you within a reasonable time of You providing notice in accordance with clause

2.2. If the cost of returning the Goods to us is not significant, you are responsible for this cost (although, you are entitled to compensation for reasonably foreseeable costs incurred because of the defect, including the cost of returning the goods to us for repair, replacement or return).

2.5 In the event that the Principal or its agent are required to inspect the Goods at the location of their use or storage, You will, on reasonable notice, allow the Principal to inspect the allegedly defective Goods at the location of their use or storage.

2.6 You are responsible for Your expenses relating to a warranty claim, except as otherwise provided for in this document. If the Principal is required to attend Your site to inspect the Goods, and it is found that there is no defect or the defect has been caused by the circumstances listed in clause 1.3, You will be responsible for the Principal's reasonable costs of attending Your site. Where reasonably possible, we will notify you to give you the option of paying for a repair or replacement

(however, we have no obligation to do so). We will also provide you with all relevant information associated with obtaining a repair or replacement of the good (including the costs involved and how the repair or replacement will be performed).

2.7 If the Principal agrees that the Goods are defective, they will be replaced or repaired within a reasonable time.

2.8 You have a duty to mitigate your loss in relation to a warranty claim. You must notify the Principal of major failures of the Goods within 3 business days of you becoming aware of such major failure. If you fail to notify us within this timeframe, then we disclaim all liability for consequential or indirect loss as well as losses of revenue or profits.

2.9 For the avoidance of doubt, it is in the Principal's sole discretion as to whether or not the Goods are defective and therefore covered by the warranty provided in this document. Any invoices for services or replacement products will not be paid for by the Principal without prior written authorisation.

3. Mandatory Warranties

3.1 The Goods come with guarantees that cannot be excluded under the Australian Consumer Law. You are entitled to a replacement or refund for a major failure and compensation for any other reasonably foreseeable loss or damage. You are also entitled to have the Goods repaired or replaced if the Goods fail to be of acceptable quality and the failure does not amount to a major failure.

4. Exclusion of Warranties and Limitation of Liability

4.1 Except as may be set out in this document and the Quote, the Principal make no express warranties or representations in relation to the Goods or their delivery.

4.2 To the full extent permitted by law, the Principal:

4.2.1 excludes all implied warranties and conditions under statute or general law as to merchantability, description, quality, suitability, fitness for purpose or otherwise;

4.2.2 is not liable for loss of profit, indirect, consequential or incidental loss, damage or injury in connection with the Goods;

4.2.3 is not liable for the labour costs associated with replacing the Goods;

4.2.4 is not be liable for any transport or freight costs in relation to any warranty claim and the repair or replacement of the Goods;

4.2.5 limits its liability in connection with the Goods (however arising, whether in tort, contract or otherwise) at its option and sole discretion to:

4.2.5.1 replace the Goods or the supply of its equivalent;

4.2.5.2 repair the Goods;

4.2.5.3 pay for the cost of replacing the Goods or acquiring their equivalent; or

4.2.5.4 pay for the cost of having the Goods repaired.

4.3 The warranties given by the Principal will not apply in the event of defects, failures or other matters regarding the goods where due to:

4.3.1 an act, default, omission or representation made by some other person, excluding Gentec or its manufacturer (for example, damage caused by the misuse or mistreatment of the good by the customer or someone else);

4.3.2 without limitation to (4.3.1) above, a failure to install the goods in accordance with any plumbing codes of practice prescribed by an Australian Federal or State Government body or organisation (including regulators), any plumbing codes of practice generally or any guidelines or instructions issued by the Principal in relation to the Goods; or

4.3.3 a cause independent of human control that occurs after the goods left our control.

4.4 Any of the warranties given by the Principal may be voided by failing to comply with the directions set out in the various user manuals or other instructional material provided to You by

Warranty

the Principal in relation to specific Goods.

4.5 However, nothing in this clause will prevent You from exercising any rights which You may have under the Competition and Consumer Act 2010 or any other law which cannot by law be excluded or modified by agreement.

5. Notices

5.1 Any notice in connection with this document must be given in writing.

5.2 Any notice in connection with this document is taken to be received:

5.2.1 if hand-delivered, on delivery;

5.2.2 if faxed, at the local time (in a place of receipt of that fax) which then equates to the then time at which the fax is sent as shown on the transmission report which is produced by the machine from which that fax is sent and which confirms transmission of that fax in its entirety unless that local time is not a Business Day, or is after 5pm on a Business Day, in which case that communication will be deemed to have been received at 9am on the next Business Day;

5.2.3 if emailed, at the local time (in a place of receipt of that email) which then equates to the then time at which the email is sent as shown on the transmission report which is produced by the computer from which that email is sent and which confirms transmission of that email in its entirety unless that local time is not a Business Day, or is after 5 pm on a Business Day, in which case that communication will be deemed to have been received at 9 am on the next Business Day; and

5.2.4 if posted, seven (7) days after being placed in the post; unless a later date is specified in it, and takes effect on the date it is taken to be received.

5.3 The address for any notice to be delivered to the Principal is as follows:

**Unit 6 20-28 Ricketty St,
Mascot, Sydney, NSW 2020**

info@gentecaustralia.com.au

www.gentecaustralia.com.au

P: +612 9319 4422

F: +612 8088 7635

